

AOC

GAMING



USER MANUAL

U32V11N

AOC GAMING MONITOR

Safety	1
National Conventions	1
Power	2
Installation	3
Cleaning	4
Other	5
Setup	6
Contents in Box	6
Setup Stand & Base	7
Adjusting Viewing Angle	8
Connecting the Monitor	9
Wall Mounting	10
HDR	11
Adjusting	12
Hotkeys	12
OSD Setting	14
Luminance	15
Color Setup	16
Picture Boost	17
OSD Setup	18
PIP Setting	19
Game Setting	20
Extra	21
Exit	22
LED Indicator	23
Troubleshoot	24
Specification	25
General Specification	25
Preset Display Modes	26
Pin Assignments	27
Plug and Play	28

Safety

National Conventions

The following subsections describe notational conventions used in this document.

Notes, Cautions, and Warnings

Throughout this guide, blocks of text may be accompanied by an icon and printed in bold type or in italic type. These blocks are notes, cautions, and warnings, and they are used as follows:



NOTE: A NOTE indicates important information that helps you make better use of your computer system.



CAUTION: A CAUTION indicates either potential damage to hardware or loss of data and tells you how to avoid the problem.



WARNING: A WARNING indicates the potential for bodily harm and tells you how to avoid the problem. Some warnings may appear in alternate formats and may be unaccompanied by an icon. In such cases, the specific presentation of the warning is mandated by regulatory authority.

Power



The monitor should be operated only from the type of power source indicated on the label. If you are not sure of the type of power supplied to your home, consult your dealer or local power company.



The monitor is equipped with a three-pronged grounded plug, a plug with a third (grounding) pin. This plug will fit only into a grounded power outlet as a safety feature. If your outlet does not accommodate the three-wire plug, have an electrician install the correct outlet, or use an adapter to ground the appliance safely. Do not defeat the safety purpose of the grounded plug.



Unplug the unit during a lightning storm or when it will not be used for long periods of time. This will protect the monitor from damage due to power surges.



Do not overload power strips and extension cords. Overloading can result in fire or electric shock.



To ensure satisfactory operation, use the monitor only with UL listed computers which have appropriate configured receptacles marked between 100-240V AC, Min. 5A.



The wall socket shall be installed near the equipment and shall be easily accessible.



Can only be used with the original adapter:

Thailand / Philippines:

Manufacturer: Dongguan Yidai Power Technology CO.,LTD

Model: YD-BG1900252US-6A

Singapore / Malaysia / Hong Kong:

Manufacturer: Dongguan Yidai Power Technology CO.,LTD


Model: YD-BG1900252GB-6A


Australia / New Zealand:


Manufacturer: Dongguan Yidai Power Technology CO.,LTD


Model: YD-BG1900252AU-6A


Installation

 Do not place the monitor on an unstable cart, stand, tripod, bracket, or table. If the monitor falls, it can injure a person and cause serious damage to this product. Use only a cart, stand, tripod, bracket, or table recommended by the manufacturer or sold with this product. Follow the manufacturer's instructions when installing the product and use mounting accessories recommended by the manufacturer. A product and cart combination should be moved with care.

 Never push any object into the slot on the monitor cabinet. It could damage circuit parts causing a fire or electric shock. Never spill liquids on the monitor.

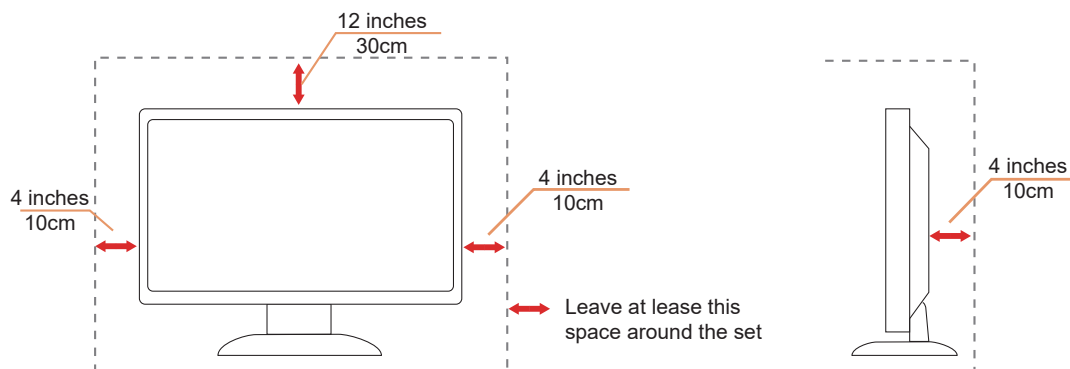
 Do not place the front of the product on the floor.

 If you mount the monitor on a wall or shelf, use a mounting kit approved by the manufacturer and follow the kit instructions.

 Leave some space around the monitor as shown below. Otherwise, air-circulation may be inadequate hence overheating may cause a fire or damage to the monitor.

See below the recommended ventilation areas around the monitor when the monitor is installed on the wall or on the stand:

Installed with stand



Cleaning

⚠ Clean the cabinet regularly with cloth. You can use soft-detergent to wipe out the stain, instead of strong-detergent which will cauterize the product cabinet.

⚠ When cleaning, make sure no detergent is leaked into the product. The cleaning cloth should not be too rough as it will scratch the screen surface.

⚠ Please disconnect the power cord before cleaning the product.



Other



If the product is emitting a strange smell, sound or smoke, disconnect the power plug IMMEDIATELY and contact a Service Center.



Make sure that the ventilating openings are not blocked by a table or curtain.



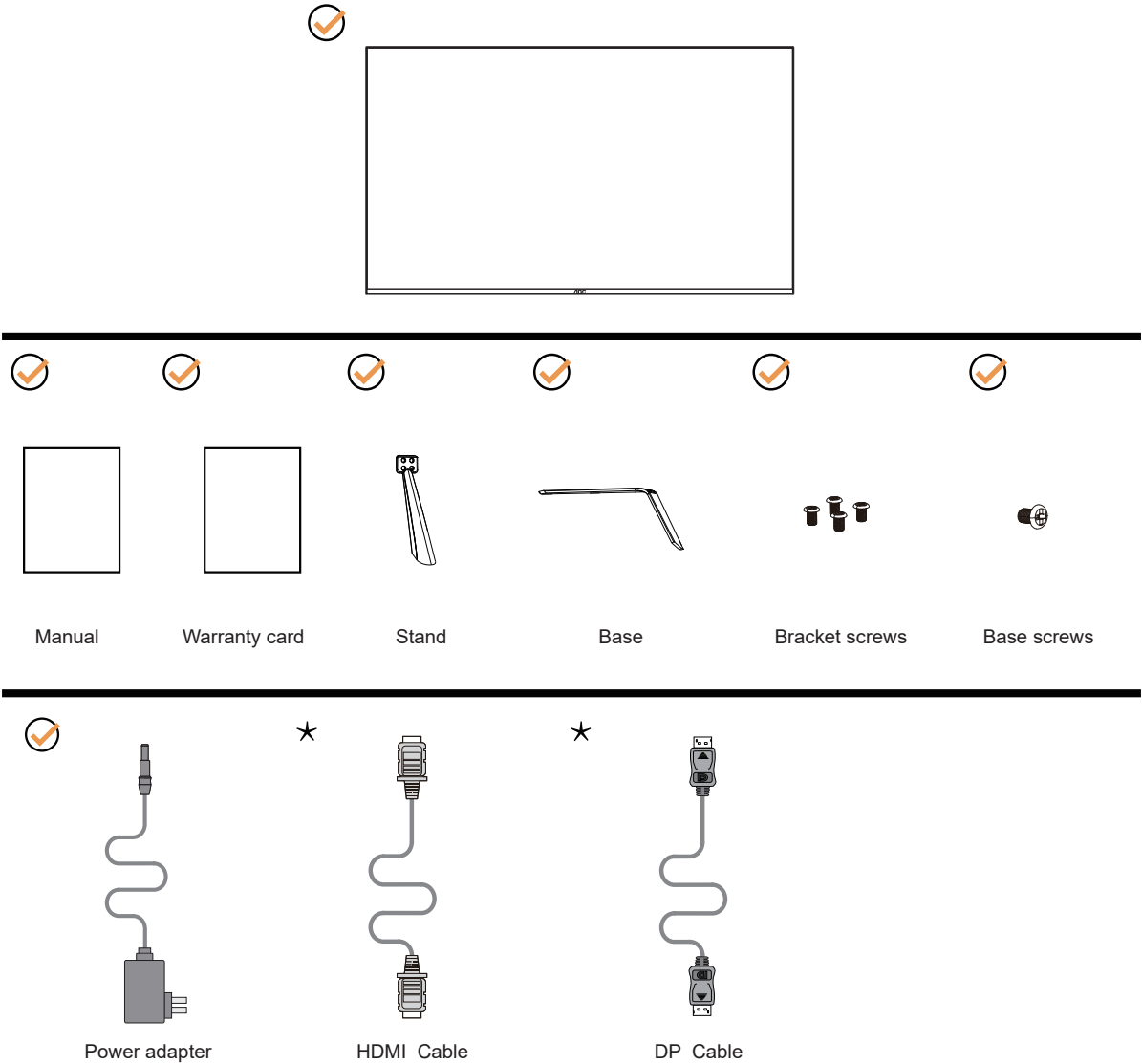
Do not engage the LCD monitor in severe vibration or high impact conditions during operation.



Do not knock or drop the monitor during operation or transportation.

Setup

Contents in Box



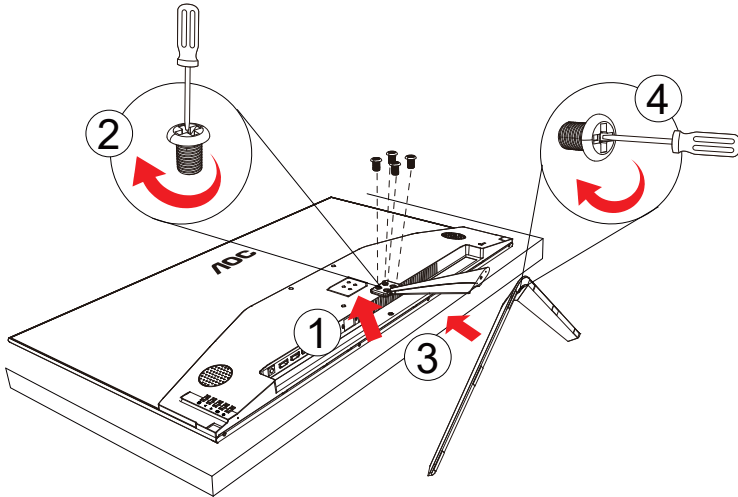
★ Not all signal cables will be provided for all countries and regions. Please check with the local dealer or AOC branch office for confirmation.

Note: Please keep the wall hanging adapter stud properly for use.

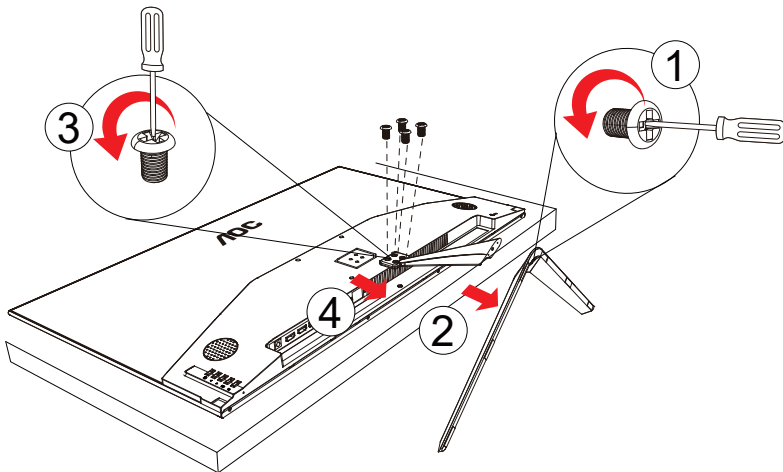
Setup Stand & Base

Please setup or remove the base following the steps as below.

Setup:



Remove:



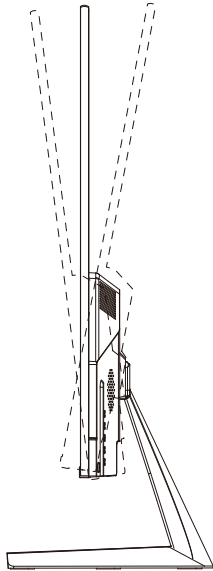
Adjusting Viewing Angle

For optimal viewing it is recommended to look at the full face of the monitor, then adjust the monitor's angle to your own preference.

Hold the stand so you will not topple the monitor when you change the monitor's angle.

You are able to adjust the monitor as below:

-7° \curvearrowright 17°

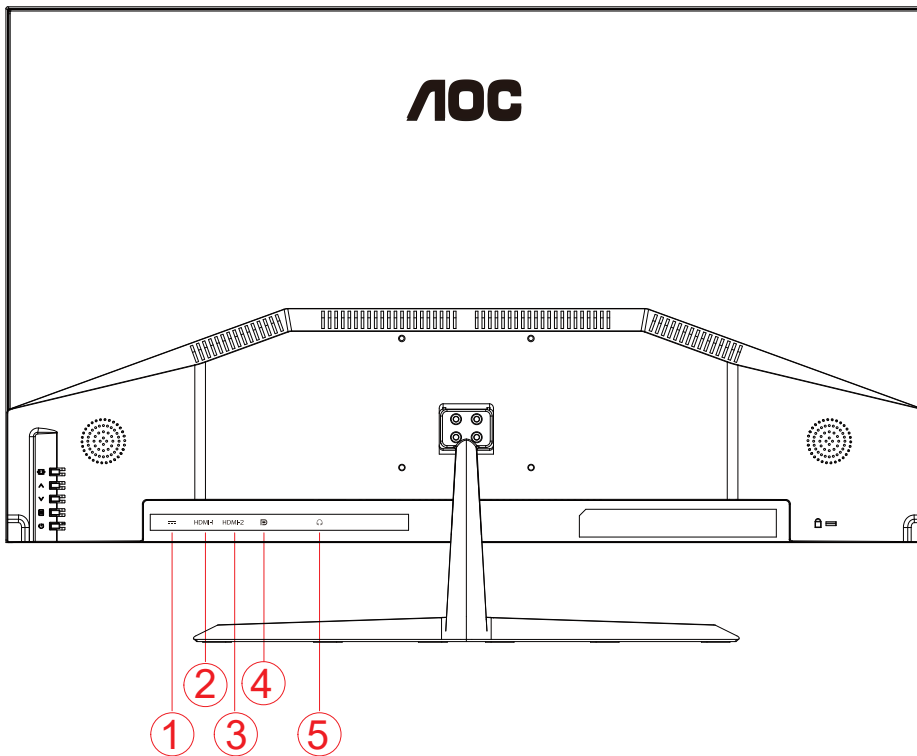


NOTE:

Do not touch the LCD screen when you change the angle. It may cause damage or break the LCD screen.

Connecting the Monitor

Cable Connections In Back of Monitor and Computer:



1. Power
2. HDMI-1
3. HDMI-2
4. DisplayPort
5. Earphone

Connect to PC

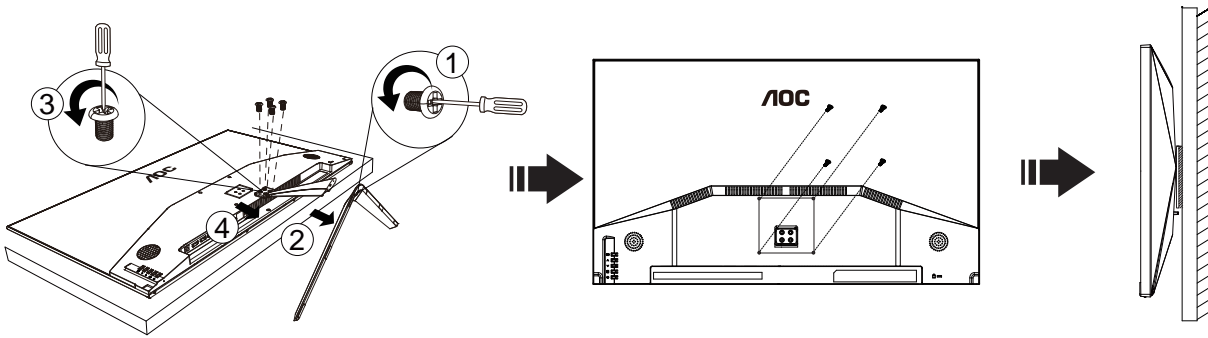
1. Connect the power cord to the back of the display firmly.
2. Turn off your computer and unplug its power cable.
3. Connect the display signal cable to the video connector on the back of your computer.
4. Plug the power cord of your computer and your display into a nearby outlet.
5. Turn on your computer and display.

If your monitor displays an image, installation is complete. If it does not display an image, please refer Troubleshooting.

To protect equipment, always turn off the PC and LCD monitor before connecting.

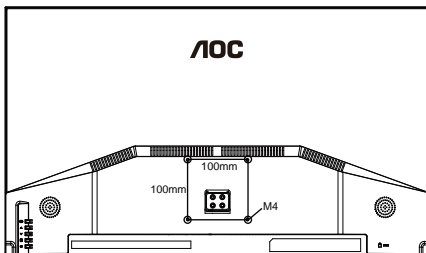
Wall Mounting

Preparing to Install An Optional Wall Mounting Arm.

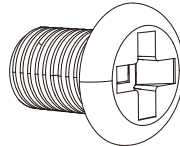
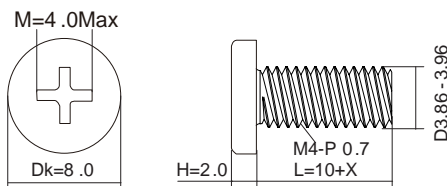


This monitor can be attached to a wall mounting arm you purchase separately. Disconnect power before this procedure. Follow these steps:

1. Remove the base.
2. Follow the manufacturer's instructions to assemble the wall mounting arm.
3. Place the wall mounting arm onto the back of the monitor. Line up the holes of the arm with the holes in the back of the monitor.
4. Reconnect the cables. Refer to the user's manual that came with the optional wall mounting arm for instructions on attaching it to the wall.



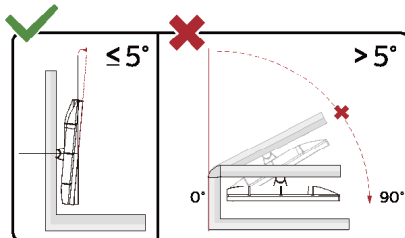
Specification of wall hanger screws: M4*(10+X)mm (X=Thickness of Wall mount bracket)



Base screw specification: M5*16mm (effective thread length 16mm)



Note: VESA mounting screw holes are not available for all models, please check with the dealer or official department of AOC. Always contact manufacturer for wall-mount installation.



* Display design may differ from those illustrated.

⚠ WARNING:

1. To avoid potential screen damage, such as panel peeling, ensure that the monitor does not tilt downward by more than -5 degrees.
2. Do not press the screen while adjusting the angle of the monitor. Grasp only the bezel.

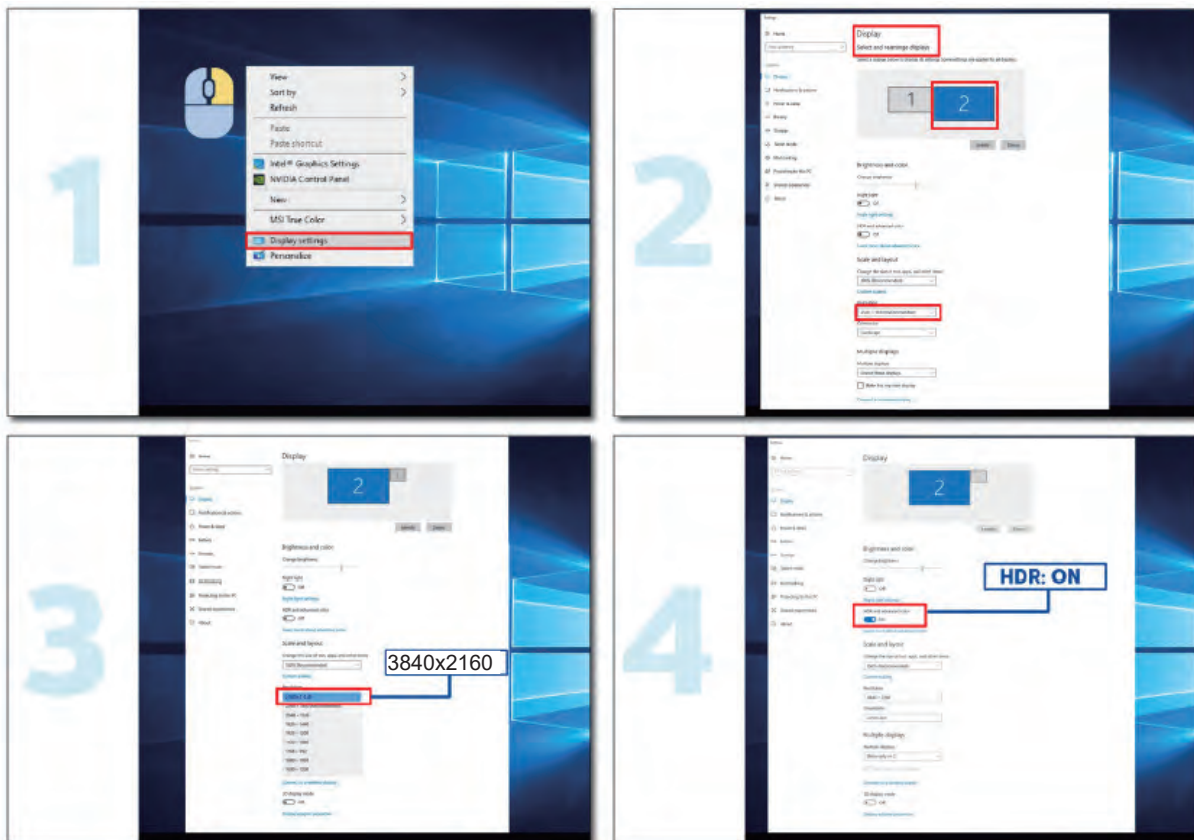
HDR

Input signals compatible with HDR10 format.

The monitor automatically enables the HDR function, But you need to have compatible players and content. For information and content on HDR-compatible devices, contact the device manufacturer and content provider. When you do not need to automatically enable the HDR function, select Disable.

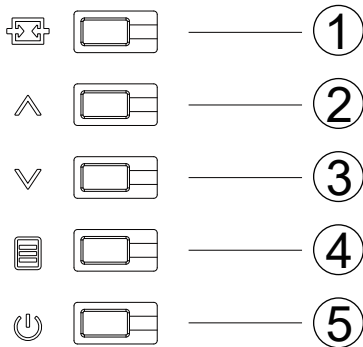
Attention :

1. Windows 10 version before V1703 (not included), does not support HDR function.
2. WIN10 version V1703, only the HDMI interface has a function, DisplayPort interface can not work.
3. Display Settings:
 - a. Enter "Display Settings", select 3840x2160 resolution, select HDR on.
 - b. Alternative resolution 3840x2160(If this option is available,) To achieve the best HDR results.



Adjusting

Hotkeys



1	Source/Exit
2	Volume/Add
3	Clear Vision/Reduce
4	Menu/Select
5	Power

Source/Exit

When the OSD is closed, press Source/Exit button will be Source hot key function. Press this key continuously to select the signal source displayed in the information bar, and press the menu key to adjust to Select the signal source.

When the OSD menu is active, this button acts as the exit key (exit OSD menu).

Volume/Add

When the OSD menu is turned off, press the "^" key to open the volume adjustment bar, then use the "^" or "V" keys to adjust the headphone output volume.

Menu/Select

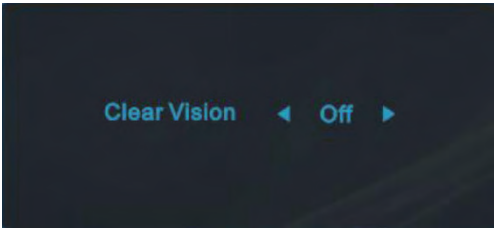
Press to display the OSD or confirm the selection.

Power

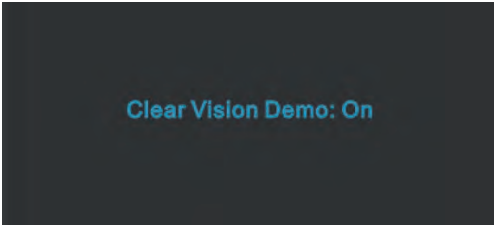
Press the Power button to turn on the monitor.

Clear Vision

- 1.Press the " v " key to activate Clear Vision when the OSD is not displayed.
- 2.Use the "^ " or "v " key to select from Weak, Medium, Strong, or Off. The default setting is always "Off".



Press and hold the " v " key for 5 seconds to activate Clear Vision demo, the message "Clear Vision Demo: On" will appear on screen for 5 seconds. Press Menu or Exit button to make the message disappear. Press and hold the " v " key for 5 seconds again to turn off Clear Vision demo. After power on/off operation, Clear Vision demo will automatically turn off.

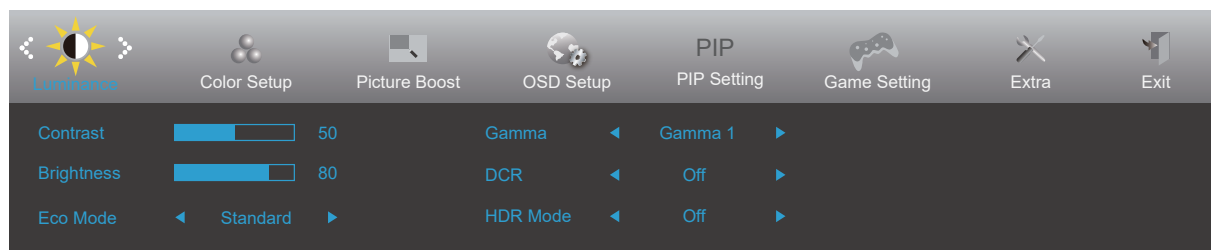


The Clear Vision function converts low-resolution blurry images into clear and vivid images, providing the optimal image viewing experience.

Clear Vision	Weak	Adjust Clear Vision
	Medium	
	Strong	
	Off	
Clear Vision Demo	Disable or Enable	Disable or Enable Demo.

OSD Setting

Basic and simple instruction on the control keys.

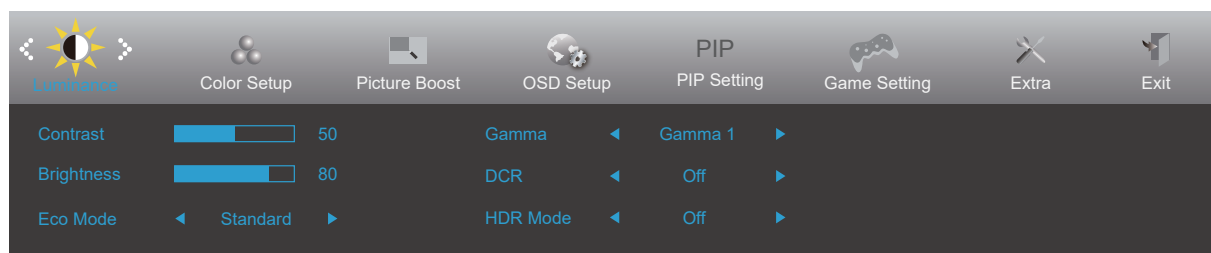



- 1). Press the **MENU-button** to activate the OSD window.
- 2). Press \wedge or \vee to navigate through the functions. Once the desired function is highlighted, press the **MENU-button** to activate it, press \wedge or \vee to navigate through the sub-menu functions. Once the desired function is highlighted, press **MENU-button** to activate it.
- 3). Press \wedge or \vee to change the settings of the selected function. Press to exit. If you want to adjust any other function, repeat steps 2-3.
- 4). OSD Lock Function: To lock the OSD, press and hold the **MENU-button** while the monitor is off and then press \odot power button to turn the monitor on. To un-lock the OSD - press and hold the **MENU-button** while the monitor is off and then press \odot power button to turn the monitor on.










Notes:

- 1). If the product has only one signal input, the item of "Input Select" is disable to adjust.
- 2). "Image Ratio" is disabled when the input resolution equals the display's native resolution.
- 3). Activating one of the DCR, Color brightening, and window brightening functions automatically disables the other two functions.

Luminance





	Contrast	0-100		Contrast from Digital-register.
	Brightness	0-100		Backlight Adjustment.
	Eco mode	Standard		Standard Mode.
		Text		Text Mode.
		Internet		Internet Mode.
		Game		Game Mode.
		Movie		Movie Mode.
		Sports		Sports Mode.
		Reading		Reading Mode.
		Uniformit		Uniformit Mode.
	Gamma	Gamma1		Adjust to Gamma 1.
		Gamma2		Adjust to Gamma 2.
		Gamma3		Adjust to Gamma 3.
	DCR	Off		Disable dynamic contrast ratio.
		On		Enable dynamic contrast ratio.
	HDR	Off		Set the HDR profile according to your usage requirements. Note: When HDR is detected, the HDR option is displayed for adjustment.
		DisplayHDR		
		HDR Picture		
		HDR Movie		
		HDR Game		
	HDR Mode	Off		Optimized for the color and contrast of the picture, which will simulate showing the HDR effect. Note: When HDR is not detected, the HDR Mode option is displayed for adjustment.
		HDR Picture		
		HDR Movie		
HDR Game				

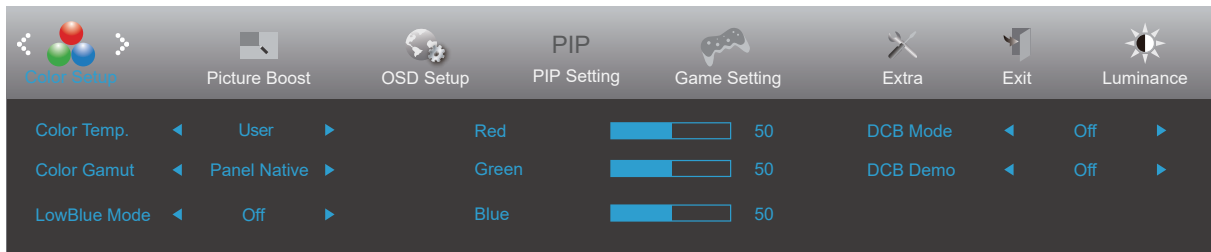
Note:

When “HDR Mode” is set to “non-off”, the items “Contrast”, “Eco Mode”, “Gamma” cannot be adjusted.

When “HDR ” is set to “non-off”, the items “Contrast”, “luminance ”, “Eco Mode”, “Gamma”, “DCR ” cannot be adjusted.

When Under“Color setting” “Color space” is set to “sRGB” , the items “Contrast”, “Eco Mode”, “Gamma”, “HDR Model” cannot be adjusted.

Color Setup



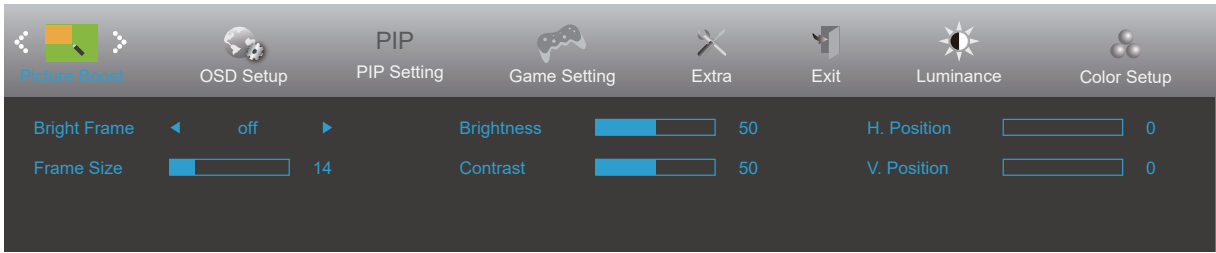
	Color Temp.	Warm	Warm Color Temperature
		Normal	Normal Color Temperature
		Cool	Cool Color Temperature
		User	Color Temperature
	Color Gamut	Panel Native	Panel standard color gamut.
		sRGB	sRGB color gamut.
	Low Blue Mode	Off / Multimedia / Internet / Office / Reading	Decrease blue light wave by controlling color temperature.
	Red	0-100	Red gain from Digital-register.
	Green	0-100	Green gain from Digital-register.
	Blue	0-100	Blue gain from Digital-register.
	DCB Mode	Off	Disable DCB Mode.
		Full Enhance	Enable Full Enhance Mode.
		Nature Skin	Enable Nature Skin Mode.
		Green Field	Enable Green Field Mode.
		Sky-blue	Enable Sky-blue Mode.
		Auto Detect	Enable AutoDetect Mode.
	DCB Demo	On or Off	Disable or Enable Demo.


Note:

When "HDR Mode" or "HDR" under "Brightness" is set to non-off, all items under "Color Settings" cannot be adjusted.

When Color Setup is set to sRGB, all other items under Color Gamut cannot be adjusted.

Picture Boost



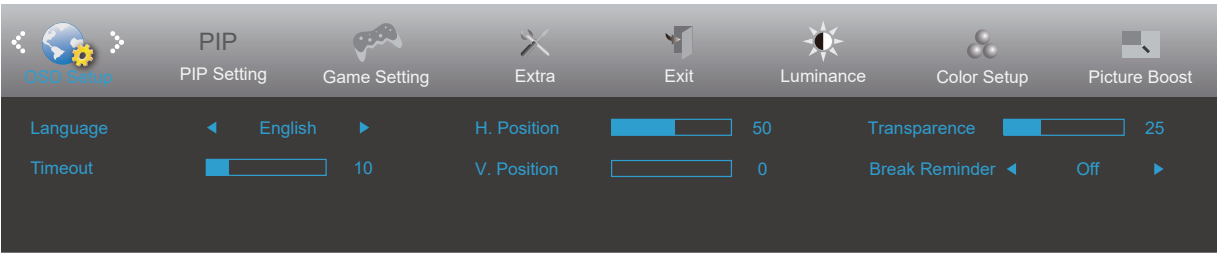
	Bright Frame	On or Off	Disable or Enable Bright Frame.
	Frame Size	14-100	Adjust Frame Size.
	Brightness	0-100	Adjust Frame Brightness.
	Contrast	0-100	Adjust Frame Contrast.
	H. position	0-100	Adjust Frame horizontal Position.
	V. position	0-100	Adjust Frame vertical Position.


Note:

Adjust the brightness, contrast, and position of the Bright Frame for better viewing experience.

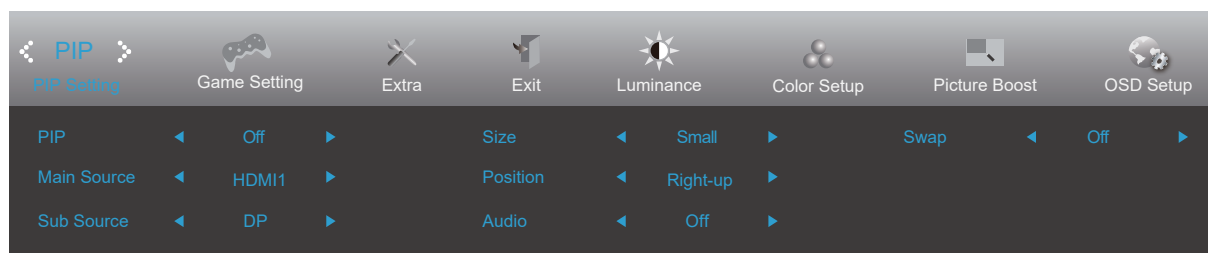
When “HDR Mode” under “Luminance” is set to “non-off”, all items under “Picture Boost” cannot be adjusted.

OSD Setup



	Language		Select the OSD language.
	Timeout	5-120	Adjust the OSD Timeout.
	H. Position	0-100	Adjust the horizontal position of OSD.
	V. Position	0-100	Adjust the vertical position of OSD.
	Transparence	0-100	Adjust the transparence of OSD.
	Break Reminder	On or Off	Break reminder if the user continuously work for more than 1hrs.

PIP Setting



PIP	PIP	Off / PIP / PBP	Disable or enable the PIP and PBP functions.
	Main Source		Select the primary screen source.
	Sub Source		Select a secondary screen source.
	Size	Small / Middle / Large	Select a secondary screen size.
	Position	Right-up	Select secondary screen positioning.
		Right-down	
		Left-up	
		Left-down	
	Audio	On: PIP audio	Turn audio on or off.
		Off: Master audio frequency	
	Swap	On: transition	Switch screen sources.
		Off: no-operation	

Note:

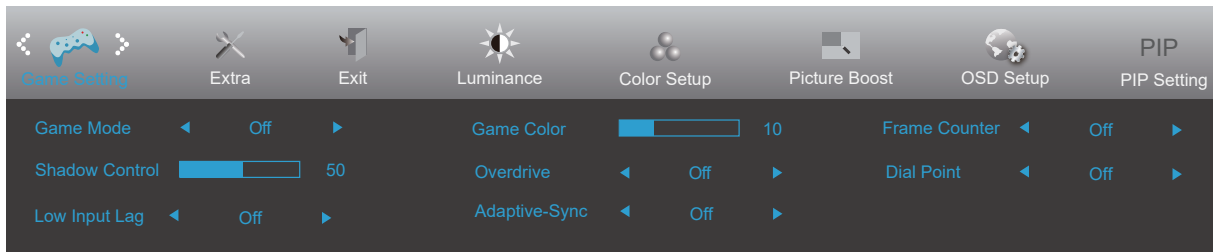
1. When "HDR" under "Brightness" is set to any mode other than "Off," all items under "PIP Settings" cannot be adjusted.
2. When PIP/PBP is enabled, some color-related adjustments in the OSD menu only apply to the main display, while the sub-display is not supported. As a result, the main and sub-displays may exhibit different color performances.
3. When PIP/PBP is enabled, the input source compatibility for the main and sub-displays is as shown in the table below:


PIP/PBP		Main source		
		HDMI1	HDMI2	DisplayPort
Sub source	HDMI1	V	V	V
	HDMI2	V	V	V
	DisplayPort	V	V	V

When PIP is enabled, the HDMI/DisplayPort interfaces support a resolution of 3840x2160@60Hz.

When PBP is enabled, the HDMI/DisplayPort interfaces support a resolution of 1920x2160@60Hz.

Game Setting



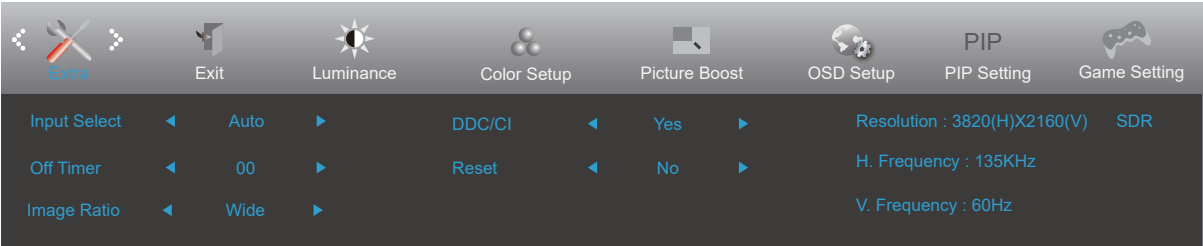
	Game Mode	Off	No optimization by Smart image game
		FPS	For playing FPS (first Person Shooters) games. Improves dark theme black level details.
		RTS	For playing RTS (Real Time Strategy). Improves the image quality.
		Racing	For playing Racing games, Provides fastest response time and high color saturation.
		Gamer 1	User's preference settings saved as Gamer 1.
		Gamer 2	User's preference settings saved as Gamer 2.
		Gamer 3	User's preference settings saved as Gamer 3.
	Shadow Control	0-100	Shadow Control Default is 50, then end-user can adjust from 50 to 100 or 0 to increase contrast for clear picture. 1. If picture is too dark to be saw the detail clearly, adjusting from 50 to 100 for clear picture. 2. If picture is too white to be saw the detail clearly, adjusting from 50 to 0 for clear picture
	Low Input Lag	On/Off	Turn off frame buffer to decrease input lag Note: The low input latency feature is enabled by default when Adaptive-Sync is turned on and cannot be adjusted.
	Game Color	0-20	Game Color will provide 0-20 level for adjusting saturation to get better picture.
	Overdrive	Off	Adjust the response time. If the user sets OverDrive to Strong, a blurry image may appear. Users can adjust the OverDrive level to their liking or turn it off.
		Weak	
		Medium	
		Strong	
	Adaptive-Sync	On/Off	Disable or Enable Adaptive-Sync. Adaptive-Sync Run Reminder: When the Adaptive-Sync feature is enabled, there may be flashing in some game environments.
	Frame Counter	Off / Right-up / Right-Down / Left-Down / Left-Up	Display V frequency on the corner selected
	Dial Point	On/Off	Turn the game crosshair on or off.


Note:

When "HDR Mode" or "HDR" under Brightness is set to any option other than Off, the "Game Mode", "Shadow Control", and "Game Color" options cannot be adjusted.

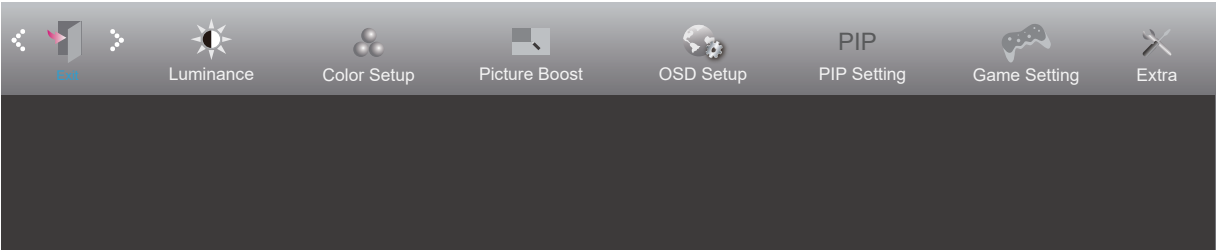
When "Color Space" under Color Settings is set to "sRGB", the "Game Mode", "Shadow Control", and "Game Color" options cannot be adjusted.

Extra



	Input Select	Auto/HDMI1/HDMI2/DP	Select Input Signal Source.
	Off Timer	0-24hrs	Select DC timed shutdown.
	Image Ratio	Wide	Select image ratio for display.
		4:3	
		1:1	
		Movie1	
		Movie2	
	DDC/CI	Yes or No	Turn ON/OFF DDC/CI Support.
	Reset	Yes or No	Reset the menu to default.

Exit



	Exit		Exit the main OSD
---	------	--	-------------------

LED Indicator

Status	LED Color
Full Power Mode	White
Active-off Mode	Orange

Troubleshoot

Problem & Question	Possible Solutions
Power LED Is Not ON	Make sure the power button is ON and the Power Cord is properly connected to a grounded power outlet and to the monitor.
No images on the screen	<ul style="list-style-type: none"> • Is the power cord connected properly? Check the power cord connection and power supply. • Is the cable connected correctly? (Connected using the VGA cable) Check the VGA cable connection. (Connected using the HDMI cable) Check the HDMI cable connection. (Connected using the DP cable) Check the DP cable connection. * VGA/HDMI/DP input is not available on every model. • If the power is on, reboot the computer to see the initial screen (the login screen), which can be seen. If the initial screen (the login screen) appears, boot the computer in the applicable mode (the safe mode for Windows 7/8/10) and then change the frequency of the video card. (Refer to the Setting the Optimal Resolution) If the initial screen (the login screen) does not appear, contact the Service Center or your dealer. • Can you see "Input Not Supported" on the screen? You can see this message when the signal from the video card exceeds the maximum resolution and frequency that the monitor can handle properly. Adjust the maximum resolution and frequency that the monitor can handle properly. • Make sure the AOC Monitor Drivers are installed.
Picture Is Fuzzy & Has Ghosting Shadowing Problem	Adjust the Contrast and Brightness Controls. Press to auto adjust. Make sure you are not using an extension cable or switch box. We recommend plugging the monitor directly to the video card output connector on the back.
Picture Bounces, Flickers Or Wave Pattern Appears In The Picture	Move electrical devices that may cause electrical interference as far away from the monitor as possible. Use the maximum refresh rate your monitor is capable of at the resolution you are using.
Monitor Is Stuck In Active Off-Mode"	The Computer Power Switch should be in the ON position. The Computer Video Card should be snugly fitted in its slot. Make sure the monitor's video cable is properly connected to the computer. Inspect the monitor's video cable and make sure no pin is bent. Make sure your computer is operational by hitting the CAPS LOCK key on the keyboard while observing the CAPS LOCK LED. The LED should either turn ON or OFF after hitting the CAPS LOCK key.
Missing one of the primary colors (RED, GREEN, or BLUE)	Inspect the monitor's video cable and make sure that no pin is damaged. Make sure the monitor's video cable is properly connected to the computer.
Screen image is not centered or sized properly	Adjust H-Position and V-Position or press hot-key (AUTO).
Picture has color defects (white does not look white)	Adjust RGB color or select desired color temperature. Select the preset color mode of the monitor.
Horizontal or vertical disturbances on the screen	Use Windows 7/8/10 shut-down mode to adjust CLOCK and FOCUS. Press to auto-adjust.
Regulation & Service	Please refer to Regulation & Service Information which is in the CD manual or www.aoc.com (to find the model you purchase in your country and to find Regulation & Service Information in Support page.

Specification

General Specification

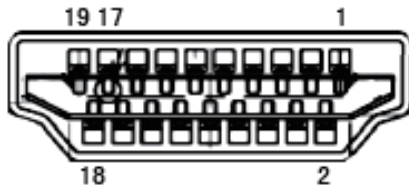
Panel	Model name	U32V11N	
	Driving system	TFT Color LCD	
	Viewable Image Size	80 cm diagonal	
	Pixel pitch	0.18159 mm(H) x 0.18159mm(V)	
Others	Horizontal scan range	30k-140kHz	
	Horizontal scan Size(Maximum)	697.306mm	
	Vertical scan range	23-75 Hz	
	Vertical Scan Size(Maximum)	392.234mm	
	Optimal preset resolution	3840x2160@60Hz	
	Max resolution	3840x2160@60Hz	
	Plug & Play	VESA DDC2B/CI	
	Power Source	19V $\overline{\text{DC}}$ 2.52A	
	Power Consumption	Typical(default brightness and contrast)	42W
		Max. (brightness = 100, contrast =100)	≤47W
		Standby mode	≤0.3W
Physical Characteristics	Connector Type	HDMIx2/DisplayPort/Earphone out	
	Signal Cable Type	Detachable	
Environmental	Temperature	Operating	0°~ 40°
		Non-Operating	-25°~ 55°
	Humidity	Operating	10% ~ 85% (non-condensing)
		Non-Operating	5% ~ 93% (non-condensing)
	Altitude	Operating	0~ 5000 m (0~ 16404ft)
		Non-Operating	0~ 12192m (0~ 40000ft)

Preset Display Modes

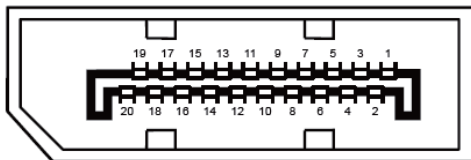
STANDARD	RESOLUTION	HORIZONTAL FREQUENCY(KHz)	VERTICAL FREQUENCY(Hz)
VGA	640x480@60Hz	31.469	59.94
	640x480@72Hz	37.861	72.809
	640x480@75Hz	37.5	75
SVGA	800x600@56Hz	35.156	56.25
	800x600@60Hz	37.879	60.317
	800x600@72Hz	48.077	72.188
	800x600@75Hz	46.875	75
XGA	1024x768@60Hz	48.363	60.004
	1024x768@70Hz	56.476	70.069
	1024x768@75Hz	60.023	75.029
SXGA	1280x1024@60Hz	63.981	60.02
	1280x1024@75Hz	79.976	75.025
WXGA+	1440x900@60Hz	55.935	59.887
	1440x900@60Hz	55.469	59.901
WSXGA	1680x1050@60Hz	65.29	59.954
	1680x1050@60Hz	64.674	59.883
FHD	1920x1080@60Hz	67.5	60
QHD	2560x1440@60Hz	88.787	59.951
UHD	3840x2160@30Hz	67.5	30
	3840x2160@50Hz	112.5	50
	3840x2160@60Hz	135	60
IBM MODES			
DOS	720x400@70Hz	31.469	70.087
MAC MODES			
VGA	640x480@67Hz	35	66.667
SVGA	832x624@75Hz	49.725	74.551
XGA	1024x768@75Hz	60.241	74.927

According to VESA standard, different operating systems and graphics cards may have a certain error (+/-1HZ) when calculating refresh rate (field frequency), the specific refresh rate (field frequency) please refer to. The object shall prevail.

Pin Assignments



Pin No.	Signal Name	Pin No.	Signal Name	Pin No.	Signal Name
1.	TMDS Data 2+	9.	TMDS Data 0-	17.	DDC/CEC Ground
2.	TMDS Data 2 Shield	10.	TMDS Clock +	18.	+5V Power
3.	TMDS Data 2-	11.	TMDS Clock Shield	19.	Hot Plug Detect
4.	TMDS Data 1+	12.	TMDS Clock-		
5.	TMDS Data 1Shield	13.	CEC		
6.	TMDS Data 1-	14.	Reserved (N.C. on device)		
7.	TMDS Data 0+	15.	SCL		
8.	TMDS Data 0 Shield	16.	SDA		



20-Pin Color Display Signal Cable

Pin No.	Signal Name	Pin No.	Signal Name
1	ML_Lane 3 (n)	11	GND
2	GND	12	ML_Lane 0 (p)
3	ML_Lane 3 (p)	13	CONFIG1
4	ML_Lane 2 (n)	14	CONFIG2
5	GND	15	AUX_CH(p)
6	ML_Lane 2 (p)	16	GND
7	ML_Lane 1 (n)	17	AUX_CH(n)
8	GND	18	Hot Plug Detect
9	ML_Lane 1 (p)	19	Return DP_PWR
10	ML_Lane 0 (n)	20	DP_PWR

Plug and Play

Plug & Play DDC2B Feature

This monitor is equipped with VESA DDC2B capabilities according to the VESA DDC STANDARD. It allows the monitor to inform the host system of its identity and, depending on the level of DDC used, communicate additional information about its display capabilities.

The DDC2B is a bi-directional data channel based on the I2C protocol. The host can request EDID information over the DDC2B channel.

Copyright description



HDMI、HDMI High-Definition Multimedia Interface and other terms、HDMI trade appearance and HDMI labels are all HDMI Licensing Administrator, Inc. is a trademark or registered trademark.

Other trademarks, product names, service names and company names appearing in this specification and the products described in this specification are the property of their respective owners.