



LCD Monitor User Manual **AG276UZ**

AOC

Safety	1
National Conventions	1
Power	2
Installation	3
Cleaning	4
Other	5
Setup	6
Contents in Box	6
Setup Stand & Base	7
Adjusting the monitor	8
Connecting the Monitor	9
Wall Mounting	10
Adaptive-Sync function (Available for selective models)	12
G-SYNC Compatible function(Available for selective models)	13
HDR	14
Adjusting	15
Hotkeys	15
OSD Key Guide (Menu)	16
OSD Setting	18
Game Setting	19
Luminance	21
PIP Setting	23
Color Setup	25
Audio	27
Light FX	28
Extra	29
OSD Setup	30
LED Indicator	31
Troubleshoot	32
Specification	33
General Specification	33
Preset Display Modes	35
PC timing support	35
Video timing support	36
Pin Assignments	37
Plug and Play	38

Safety

National Conventions

The following subsections describe notational conventions used in this document.

Notes, Cautions, and Warnings

Throughout this guide, blocks of text may be accompanied by an icon and printed in bold type or in italic type. These blocks are notes, cautions, and warnings, and they are used as follows:



NOTE: A NOTE indicates important information that helps you make better use of your computer system.



CAUTION: A CAUTION indicates either potential damage to hardware or loss of data and tells you how to avoid the problem.



WARNING: A WARNING indicates the potential for bodily harm and tells you how to avoid the problem. Some warnings may appear in alternate formats and may be unaccompanied by an icon. In such cases, the specific presentation of the warning is mandated by regulatory authority.

Power



The monitor should be operated only from the type of power source indicated on the label. If you are not sure of the type of power supplied to your home, consult your dealer or local power company.



The monitor is equipped with a three-pronged grounded plug, a plug with a third (grounding) pin. This plug will fit only into a grounded power outlet as a safety feature. If your outlet does not accommodate the three-wire plug, have an electrician install the correct outlet, or use an adapter to ground the appliance safely. Do not defeat the safety purpose of the grounded plug.



Unplug the unit during a lightning storm or when it will not be used for long periods of time. This will protect the monitor from damage due to power surges.



Do not overload power strips and extension cords. Overloading can result in fire or electric shock.



To ensure satisfactory operation, use the monitor only with UL listed computers which have appropriate configured receptacles marked between 100-240V AC, Min. 5A.



The wall socket shall be installed near the equipment and shall be easily accessible.



For use only with the attached power adapter

Manufacturers: TPV ELECTRONICS(FUJIAN) CO., LTD

Model: ADPC2090

Installation

! Do not place the monitor on an unstable cart, stand, tripod, bracket, or table. If the monitor falls, it can injure a person and cause serious damage to this product. Use only a cart, stand, tripod, bracket, or table recommended by the manufacturer or sold with this product. Follow the manufacturer's instructions when installing the product and use mounting accessories recommended by the manufacturer. A product and cart combination should be moved with care.

! Never push any object into the slot on the monitor cabinet. It could damage circuit parts causing a fire or electric shock. Never spill liquids on the monitor.

! Do not place the front of the product on the floor.

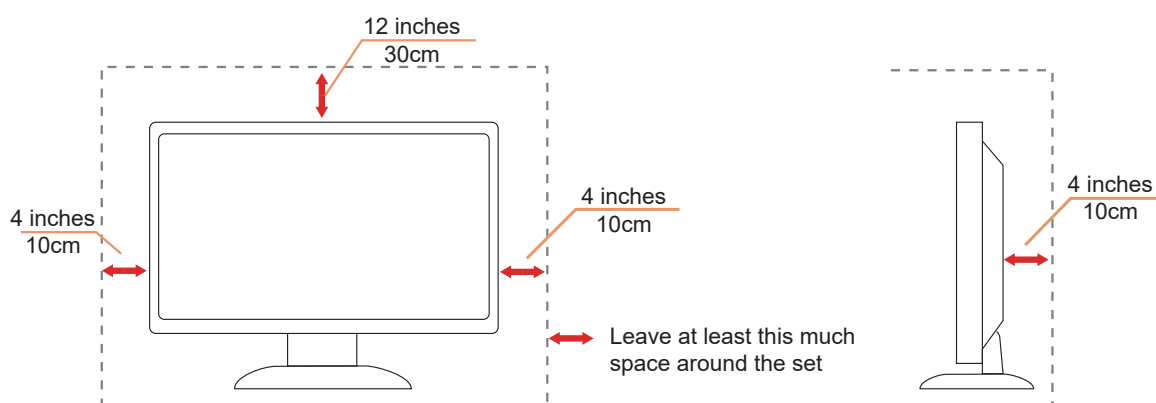
! If you mount the monitor on a wall or shelf, use a mounting kit approved by the manufacturer and follow the kit instructions.

! Leave some space around the monitor as shown below. Otherwise, air-circulation may be inadequate hence overheating may cause a fire or damage to the monitor.


! To avoid potential damage, for example the panel peeling from the bezel, ensure that the monitor does not tilt downward by more than -5 degrees. If the -5 degree downward tilt angle maximum is exceeded, the monitor damage will not be covered under warranty.


See below the recommended ventilation areas around the monitor when the monitor is installed on the wall or on the stand:

Installed with stand




Cleaning


 Clean the cabinet regularly with a water-dampened, soft cloth.

 When cleaning use a soft cotton or microfiber cloth. The cloth should be damp and almost dry, do not allow liquid into the case.




 Please disconnect the power cord before cleaning the product.

Other

 If the product is emitting a strange smell, sound or smoke, disconnect the power plug IMMEDIATELY and contact a Service Center.

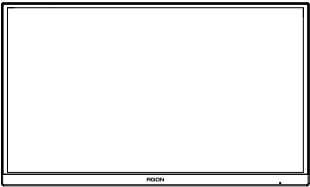
 Make sure that the ventilating openings are not blocked by a table or curtain.

 Do not engage the LCD monitor in severe vibration or high impact conditions during operation.

 Do not knock or drop the monitor during operation or transportation.

Setup

Contents in Box



Monitor



Quick Start Guide

*



Warranty Card



Stand



Base



Wall Mount
Bracket



Screwdriver



Wall Mount
Bracket screws



Power Cable



Adapter

*



DisplayPort Cable

*



HDMI Cable

*



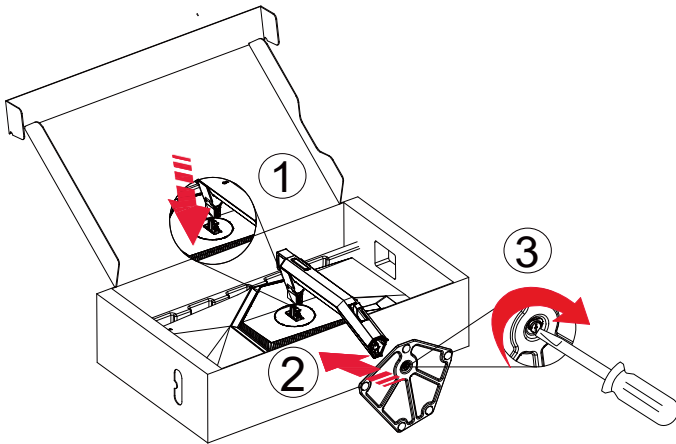
USB Cable

✱ Not all signal cables will be provided for all countries and regions. Please check with the local dealer or AOC branch office for confirmation.

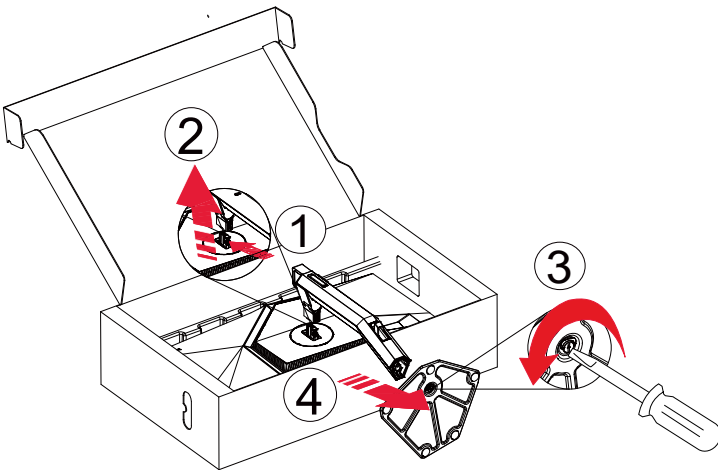
Setup Stand & Base

Please setup or remove the base following the steps as below.

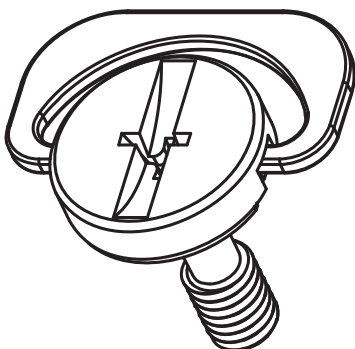
Setup:



Remove:



Specification for base screw: M6*13mm (effective thread 5.5mm)

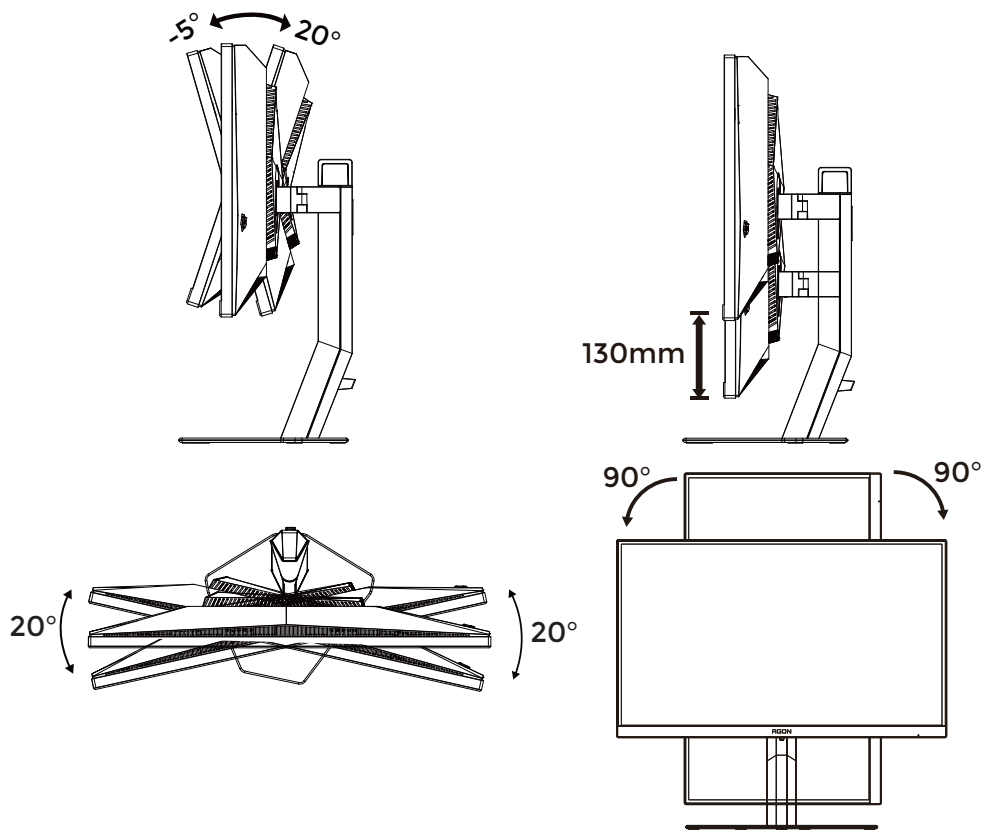


Adjusting the monitor

For optimal viewing it is recommended to look at the full face of the monitor, then adjust the monitor's angle to your own preference.

Hold the stand so you will not topple the monitor when you change the monitor's angle.

You are able to adjust the monitor as below:



NOTE:

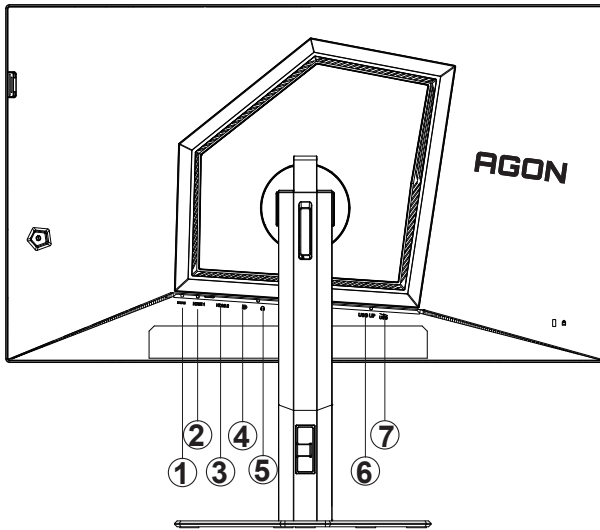
Do not touch the LCD screen when you change the angle. Touching the LCD screen may cause damage.

Warning:

1. To avoid potential screen damage, such as panel peeling, ensure that the monitor does not tilt downward by more than -5 degrees.
2. Do not press the screen while adjusting the angle of the monitor. Grasp only the bezel.

Connecting the Monitor

Cable Connections In Back of Monitor.



1. Power
2. HDMI1
3. HDMI2
4. DisplayPort
5. Earphone
6. USB upstream
7. USB3.2 Gen1 downstreamx1
USB3.2 Gen1 downstream + fast chargingx1

Connect to PC

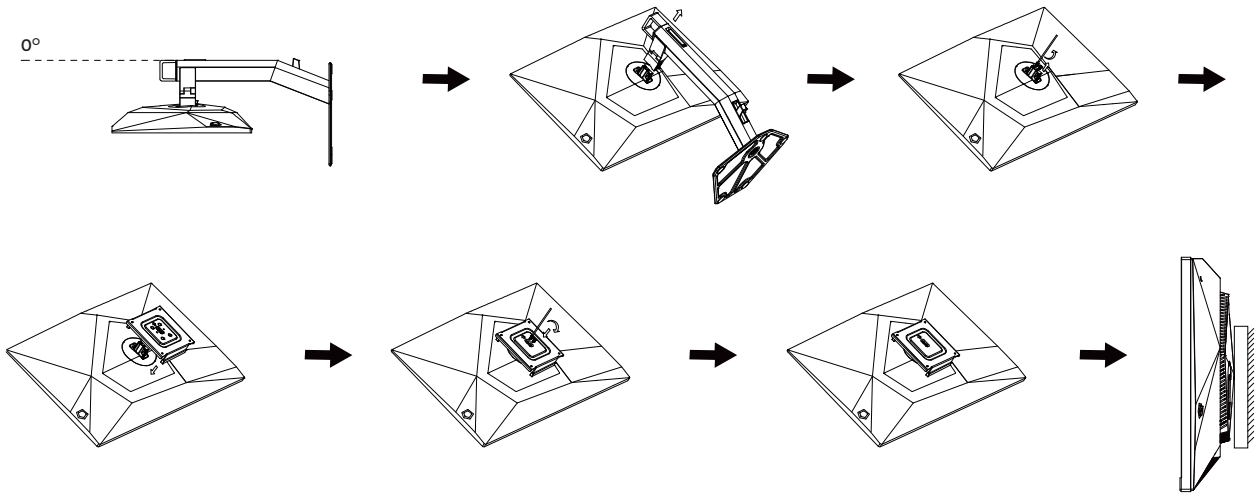
1. Connect the power cord to the back of the display firmly.
2. Turn off your computer and unplug its power cable.
3. Connect the display signal cable to the video connector on your computer.
4. Plug the power cord of your computer and your display into a nearby outlet.
5. Turn on your computer and display.

If your monitor displays an image, installation is complete. If it does not display an image, please refer Troubleshooting.

To protect equipment, always turn off the PC and LCD monitor before connecting.

Wall Mounting

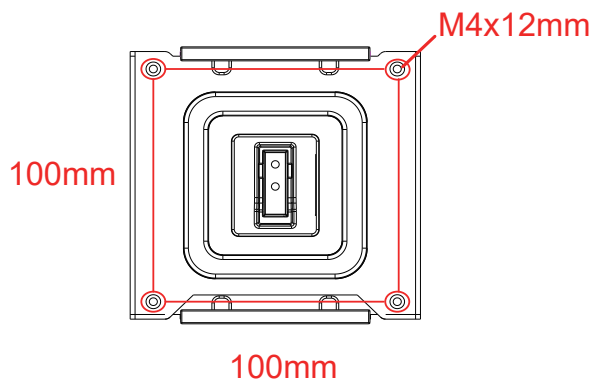
Preparing to Install An Optional Wall Mounting Arm.



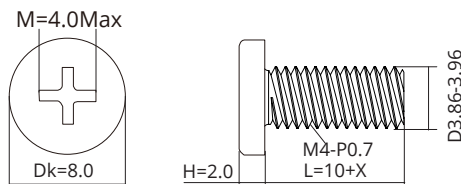
This monitor can be attached to a wall mounting arm you purchase separately. Disconnect power before this procedure. Follow these steps:

1. Remove the base.
2. Follow the manufacturer's instructions to assemble the wall mounting arm.
3. Place the wall mounting arm onto the back of the monitor. Line up the holes of the arm with the holes in the back of the monitor.
4. Reconnect the cables. Refer to the user's manual that came with the optional wall mounting arm for instructions on attaching it to the wall.

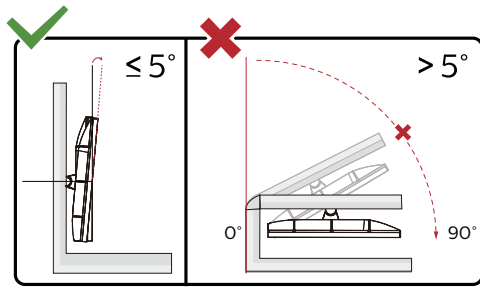
Wall hanger:



Specification of wall hanger screws: M4*(10+X)mm, (X=Thickness of Wall mount bracket)



Noted: VESA mounting screw holes are not available for all models, please check with the dealer or official department of AOC. Always contact manufacturer for wall-mount installation.



* Display design may differ from those illustrated.

Warning :

1. To avoid potential screen damage, such as panel peeling, ensure that the monitor does not tilt downward by more than -5 degrees.
2. Do not press the screen while adjusting the angle of the monitor. Grasp only the bezel.

Adaptive-Sync function (Available for selective models)

1. Adaptive-Sync function is working with DisplayPort/HDMI
2. Compatible Graphics Card: Recommend list is as the below, also could be checked by visiting www.AMD.com

Graphics Cards

- Radeon™ RX Vega series
- Radeon™ RX 500 series
- Radeon™ RX 400 series
- Radeon™ R9/R7 300 series (R9 370/X, R7 370/X, R7 265 except)
- Radeon™ Pro Duo (2016)
- Radeon™ R9 Nano series
- Radeon™ R9 Fury series
- Radeon™ R9/R7 200 series (R9 270/X, R9 280/X except)

Processors

- AMD Ryzen™ 7 2700U
- AMD Ryzen™ 5 2500U
- AMD Ryzen™ 5 2400G
- AMD Ryzen™ 3 2300U
- AMD Ryzen™ 3 2200G
- AMD PRO A12-9800
- AMD PRO A12-9800E
- AMD PRO A10-9700
- AMD PRO A10-9700E
- AMD PRO A8-9600
- AMD PRO A6-9500
- AMD PRO A6-9500E
- AMD PRO A12-8870
- AMD PRO A12-8870E
- AMD PRO A10-8770
- AMD PRO A10-8770E
- AMD PRO A10-8750B
- AMD PRO A8-8650B
- AMD PRO A6-8570
- AMD PRO A6-8570E
- AMD PRO A4-8350B
- AMD A10-7890K
- AMD A10-7870K
- AMD A10-7850K
- AMD A10-7800
- AMD A10-7700K
- AMD A8-7670K
- AMD A8-7650K
- AMD A8-7600
- AMD A6-7400K

G-SYNC Compatible function(Available for selective models)

1. G-SYNC Compatible function is working with DP/HDMI
2. To enjoy the perfect gaming experience with G-SYNC, you need to purchase a Separate NVIDIA GPU card that supports G-SYNC.

G-sync system requirements

Desktop computer connected to G-SYNC monitor:

Graphics cards supported: G-SYNC features require NVIDIA GeForce® GTX 650 Ti BOOST or higher graphics cards.

Driver: R340.52 or later

Operating system:

Windows 10

Windows 8.1

Windows 7

System requirements: DisplayPort 1.2 of the GPU must be supported.

Notebook computer connected to G-SYNC monitor:

Supported graphics cards: NVIDIA GeForce® GTX 980M, GTX 970M, GTX 965M GPU or higher graphics cards

Driver: R340.52 or higher

Operating system:

Windows 10

Windows 8.1

Windows 7

System requirements: DisplayPort 1.2 driven directly from the GPU must be supported.

For more information about NVIDIA G-SYNC, please visit: <https://www.nvidia.cn/>

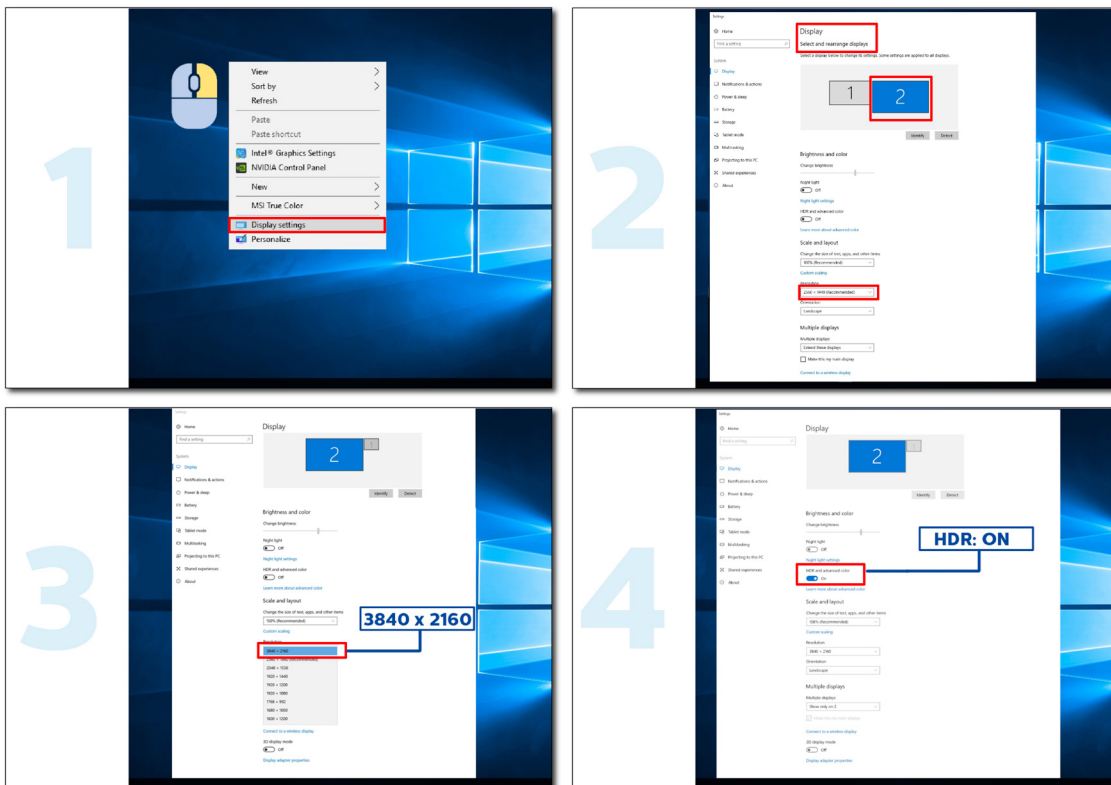
HDR

It is compatible with input signals in HDR10 format.

The display may automatically activate the HDR function if the player and content are compatible. Please contact the device manufacturer and the content provider for information on the compatibility of your device and content. Please select "OFF" for the HDR function when you have no need for automatical activation function.

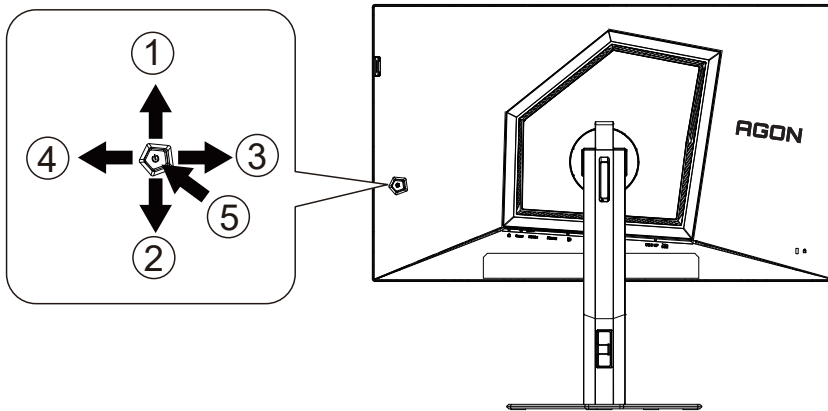
Note:

1. No special setting is needed for the DisplayPort/HDMI interface in WIN10 versions lower (older) than V1703.
2. Only the HDMI interface is available and the DisplayPort interface cannot function in WIN10 version V1703.
3. Display Setting:
 - a. The display resolution is set to 3840*2160, and HDR is preset to ON.
 - b. After entering an application, the best HDR effect can be achieved when the resolution is changed to 3840*2160 (if available).



Adjusting

Hotkeys



1	Source/Up
2	Dial Point/Down
3	User key (Dual Resolution)/Left
4	Light FX /Right
5	Power/ Menu/Enter

Power/Menu/Enter

Press the Power button to turn on the monitor.

When there is no OSD, Press to display the OSD or confirm the selection. Press about 2 seconds to turn off the monitor.

Dial Point/Down

When there is no OSD, press Dial Point button to show / hide Dial Point.

User key (Dual Resolution)/Left

When there is no OSD, press "Left" key to open Dual Resolution function, then press "Up" or "Down" key to select UHD 120Hz/UHD 240Hz/FHD 480Hz.

Light FX/Right

When there is no OSD, press "Right" key to active Light FX function.

Source/Up

When the OSD is closed, press Source/Auto/Up button will be Source hot key function.

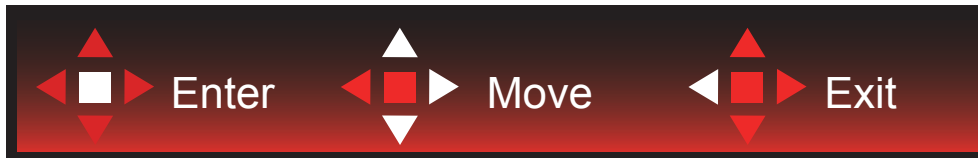
OSD Key Guide (Menu)



Enter : Use Enter key to enter the next OSD level

Move : Use Left / Up / Down key to move OSD selection

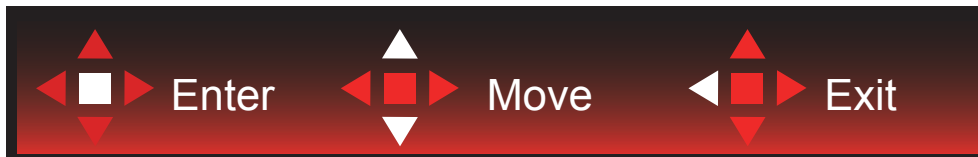
Exit : Use Right key to exit OSD



Enter : Use Enter key to enter the next OSD level

Move : Use Right / Up / Down key to move OSD selection

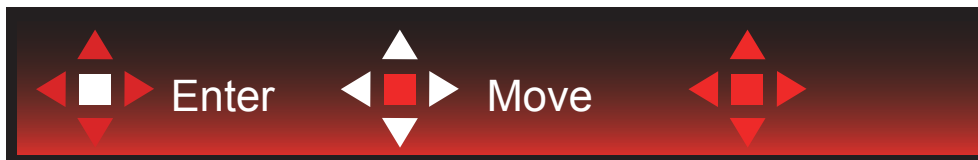
Exit : Use Left key to exit OSD



Enter : Use Enter key to enter the next OSD level

Move : Use Up / Down key to move OSD selection

Exit : Use Left key to exit OSD



Move : Use Left / Right / Up / Down Key to move OSD selection



Exit : Use Left key to exit OSD to previous OSD level

Enter : Use Right key to enter next OSD level

Select : Use Up / Down key to move OSD selection



Enter : Use Enter key to apply the OSD setting and back to previous OSD level

Select : Use Down key to adjust OSD setting



Select : Use Up / Down key to adjust OSD setting

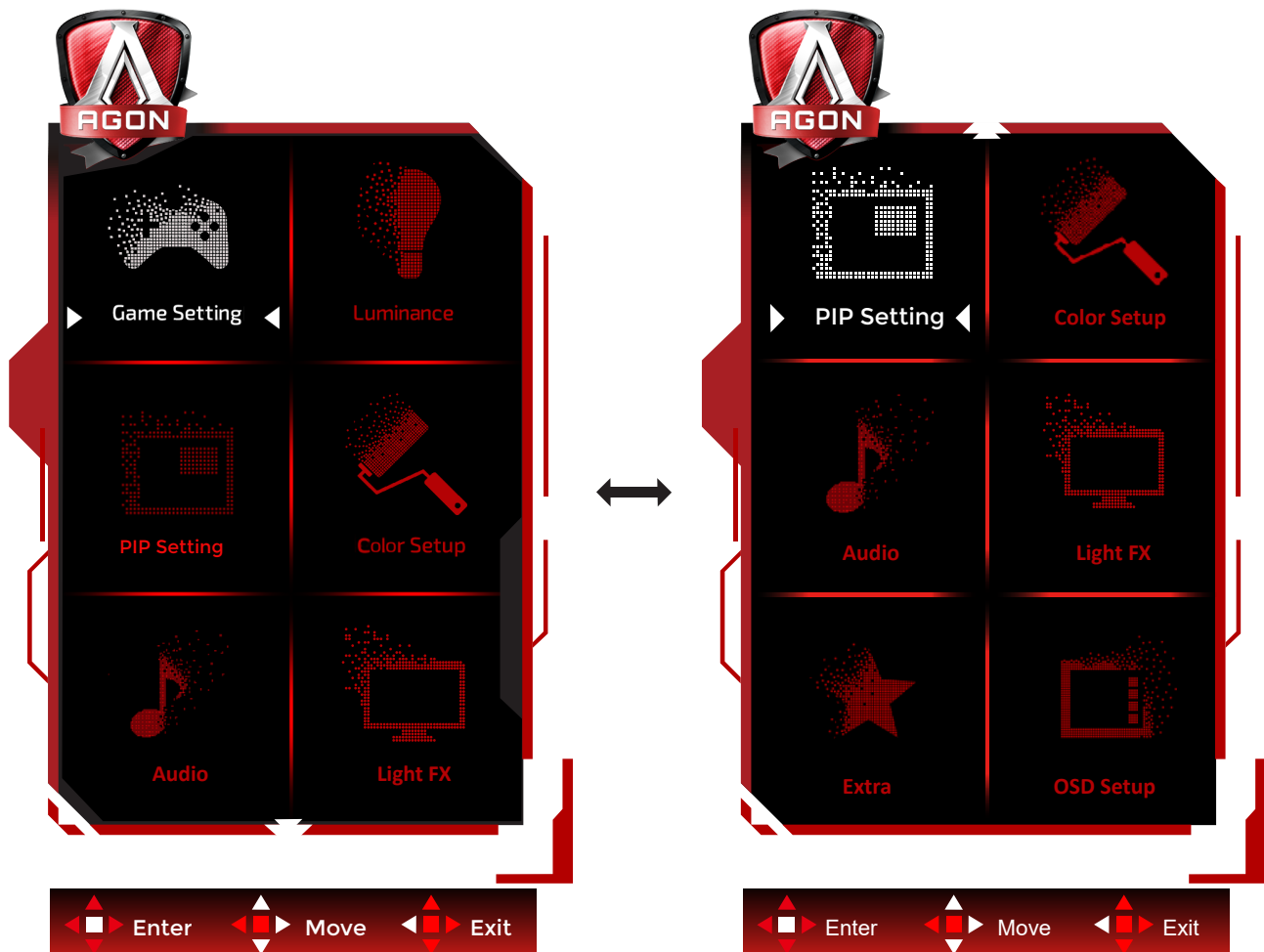


Enter : Use Enter key to exit OSD to previous OSD level

Select : Use Left / Right key to adjust OSD setting

OSD Setting

Basic and simple instruction on the control keys.

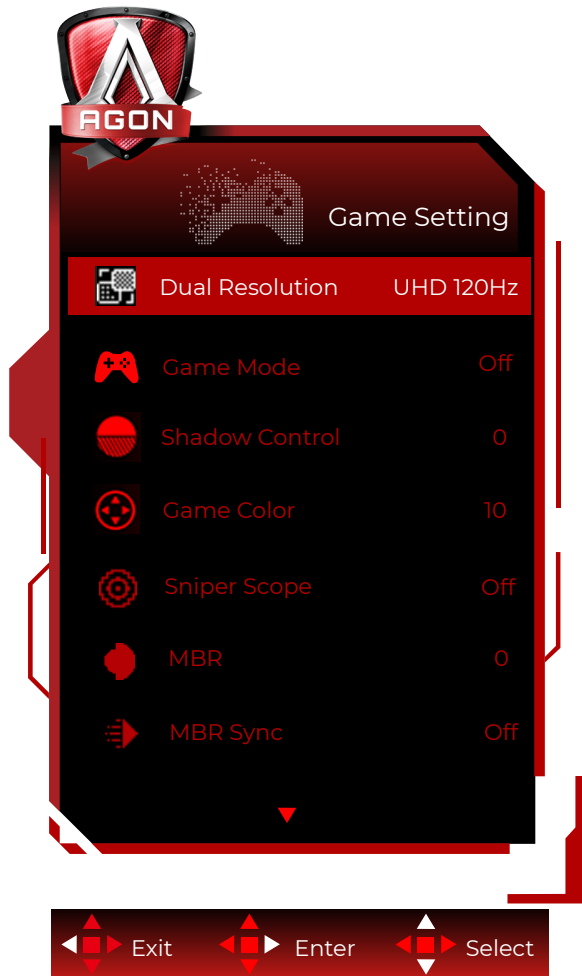



- 1). Press the MENU-button to activate the OSD window.
- 2). Follow Key Guide to move or select (adjust) OSD settings
- 3). OSD Lock/Unlock Function: To lock or unlock the OSD, press and hold the Down-button for 10s while OSD function is not active.

Notes:

- 1). If the product has only one signal input, the item of "Input Select" is disable to adjust.
- 2). ECO modes (except Standard mode), DCR and DCB mode , for these three states that only one state can exist.

Game Setting



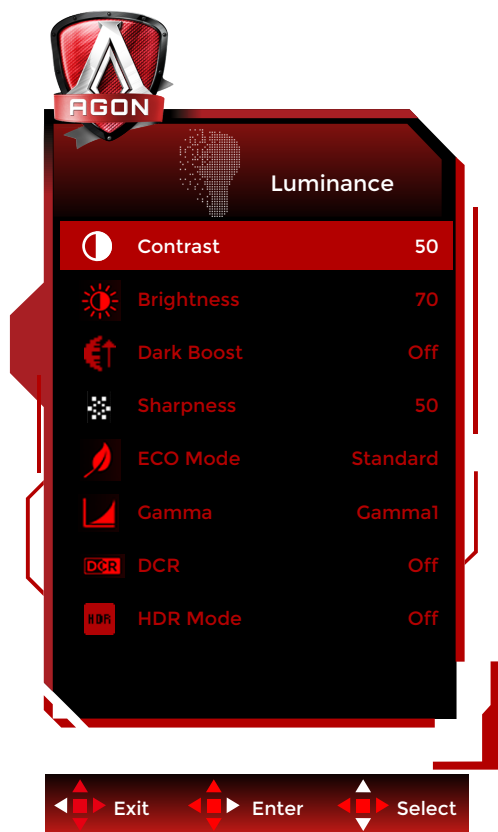
	Dual Resolution	UHD 120Hz	Set Dual Resolution mode according to usage requirements.
		UHD 240Hz	
		FHD 480Hz	
	Game Mode	Off	No optimization by Game Mode.
		FPS	For playing FPS (First Person Shooters) games. Improves dark theme black level details.
		RTS	For playing RTS (Real Time Strategy). Improves the image quality.
		Racing	For playing Racing games, Provides fastest response time and high color saturation.
		Gamer 1	User's preference settings saved as Gamer 1.
		Gamer 2	User's preference settings saved as Gamer 2.
		Gamer 3	User's preference settings saved as Gamer 3.
	Shadow Control	0-20	Shadow Control Default is 0, then end-user can adjust from 0 to 20 increase for a clearer picture. If picture is too dark to be saw the detail clearly, adjusting from 0 to 20 for a clear picture.
	Game Color	0-20	Game Color will provide 0-20 level for adjusting saturation to get better picture.
	Sniper Scope	Off /1.0 /1.5 / 2.0	Adjust the Sniper Scope.

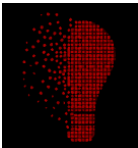
	MBR	0 ~ 20	<p>MBR (Motion Blur Reduction) Provides 0-20 levels of adjustments to reduce motion blur.</p> <p>Note:</p> <ol style="list-style-type: none"> 1. The MBR function can be adjusted when Adaptive-Sync is turned off, and the refresh rate $\geq 75\text{Hz}$. 2. The brightness of the screen will decrease as the adjustment value increases.
	MBR Sync	Off / On	<p>Disable or Enable MBR Sync (Motion Blur Remove).</p> <p>Note:</p> <p>The MBR Sync function can be adjusted when Adaptive-Sync is turned On, and the input signal is variable frequency.</p>
	Adaptive-Sync	Off / On	<p>Disable or Enable Adaptive-Sync.</p> <p>Adaptive-Sync Run Reminder: When the Adaptive-Sync feature is enabled, there may be flashing in some game environments.</p>
	Overdrive	Off / Weak / Medium / Strong / Boost	<p>Adjust the response time.</p> <p>Note:</p> <ol style="list-style-type: none"> 1. If the user adjusts OverDrive to "Strong" the displayed image may be blurred. Users can adjust the OverDrive level or turn it off according to their preferences. 2. The "Boost" function is optional when Adaptive-Sync is turned off, and the refresh rate is $\geq 75\text{Hz}$. 3. The screen brightness will decrease when the "Boost" function is turned on.
	Low Input Lag	Off / On	Turn off frame buffer to decrease input lag.
	Frame Counter	Off / Right-Up / Right-Down / Left-Down / Left-Up	Display V frequency on the corner selected.

Note:

1. When "HDR Mode" under "Luminance" is set to non-off, "Shadow Control" and "Game Color" can't be adjusted.
2. When "HDR" under "Luminance" is set to non-off, "Shadow Control", "Game Color", "MBR", "MBR Sync" and "Boost" under "Overdrive" can't be adjusted or selected.
3. When the "Color Space" under "Color Settings" is set to "sRGB" or "DCI-P3", "Shadow Control", "Game Color", "MBR", "MBR Sync" and "Boost" under "Overdrive" can't be adjusted or selected.

Luminance



	Contrast	0-100	Contrast from Digital-register.
	Brightness	0-100	Backlight Adjustment
	Dark Boost	Off / Level 1 / Level 2 / Level 3	Enhance the screen details in the dark or bright area to adjust the brightness in the bright area and ensure that it is not oversaturated.
	Sharpness	0-100	Sharpness Adjustment.
	Eco mode	Standard	Standard Mode
		Text	Text Mode
		Internet	Internet Mode
		Game	Game Mode
		Movie	Movie Mode
		Sports	Sports Mode
		Reading	Reading Mode
		Uniformity	Uniformity Mode
	Gamma	Gamma1	Adjust to Gamma 1
		Gamma2	Adjust to Gamma 2
		Gamma3	Adjust to Gamma 3
	DCR	Off/On	Disable/ Enable dynamic contrast ratio
	HDR	Off	Set the HDR profile according to your usage requirements. Note: When HDR is detected, the HDR option is displayed for adjustment.
		DisplayHDR	
		HDR Picture	
		HDR Movie	
		HDR Game	

	HDR Mode	Off	Optimized for the color and contrast of the picture, which will simulate showing the HDR effect. Note: When HDR is not detected, the HDR Mode option is displayed for adjustment.
		HDR Picture	
		HDR Movie	
		HDR Game	

Note:

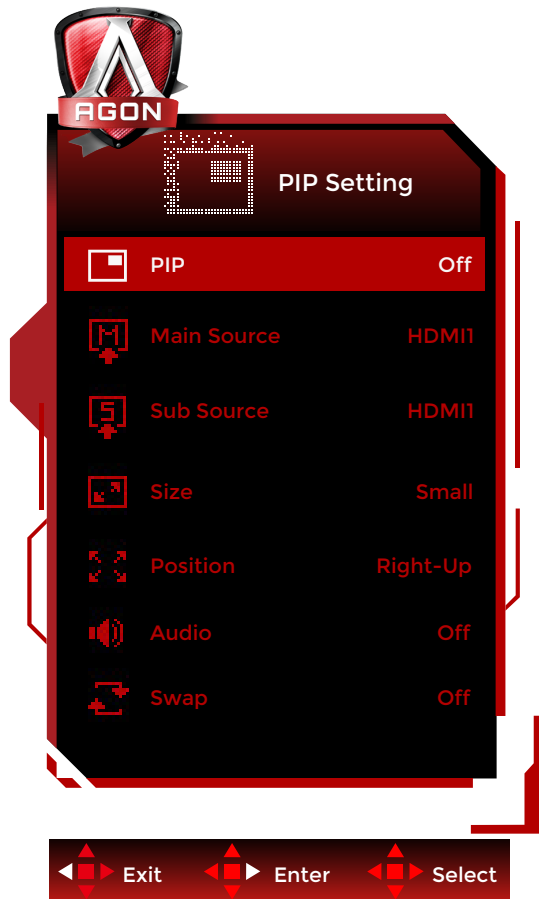
When “HDR Mode” is set to non-off, “Contrast”, “Eco Adjustment”, “Gamma” and “Dark Boost” can’t be adjusted.

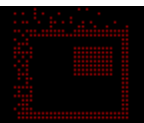
When “HDR” is set to “DisplayHDR”, all items under “Luminance” except “Brightness” can’t be adjusted.

When “HDR” is set to “HDR Picture”/“HDR Movie”/“HDR Game”, “Contrast”, “Eco Adjustment”, “Gamma” and “DCR” can’t be adjusted.

When the “Color Space” under “Color Settings” is set to “sRGB” or “DCI-P3”, “Contrast”, “Dark Boost”, “Gamma”, “Eco Adjustment”, “HDR Mode” cannot be adjusted.

PIP Setting



	PIP Setting	OFF / PIP / PBP	Disable or Enable PIP or PBP.
	Main Source		Select main screen source.
	Sub Source		Select sub screen source.
	Size	Small / Middle / Large	Select screen size.
	Position	Right-Up / Right-Down / Left-Down / Left-Up	Set the screen location.
	Audio	Off / On	Select audio output for the main screen or sub screen.
	Swap	Off / On	Switch screen source.

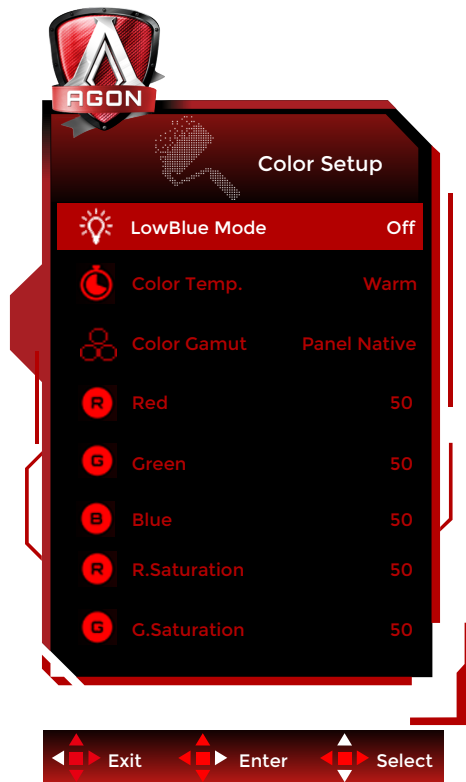
Note:


- 1). When "HDR" under "Luminance" is set to non-off, all items under "PIP Settings" cannot be adjusted.
- 2). When PIP/PBP is turned on, some color-related adjustments in the OSD menu are only effective for the main picture, but not for the sub-picture. Therefore, the main picture and the sub-picture may have different colors.
- 3). When PIP is enabled, DisplayPort and HDMI signal sources support maximum resolutions of 3840x2160@144Hz (UHD) and 1920x1080@320Hz (FHD).
- 4). When PBP is enabled, DisplayPort and HDMI signal sources support maximum resolutions of 1920x2160@120Hz (UHD) and 960x1080@320Hz (FHD).

5).When PBP/PIP is turned on, the main source/sub-source input compatibility is as follows:

PIP/PBP		Main source		
		HDMI1	HDMI2	DisplayPort
Sub sources	HDMI1	V	V	V
	HDMI2	V	V	V
	DisplayPort	V	V	V

Color Setup



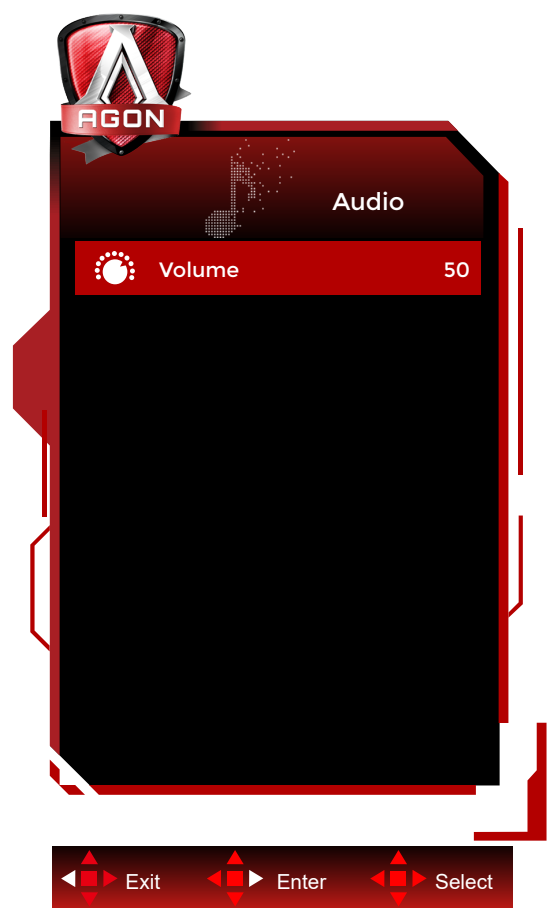
	LowBlue Mode	Off / Multimedia / Internet / Office / Reading	Decrease blue light wave by controlling color temperature.
	Color Temp.	Warm	Recall Warm Color Temperature from EEPROM.
		Normal	Recall Normal Color Temperature from EEPROM.
		Cool	Recall Cool Color Temperature from EEPROM.
		User	Restore user color temperature from EEPROM.
	Color Gamut	Panel Native	Standard color space panel.
		sRGB	Recall sRGB Color Temperature from EEPROM.
		DCI-P3	DCI-P3 color space.
	Red	0-100	Red gain from Digital-register.
	Green	0-100	Green gain from Digital-register.
	Blue	0-100	Blue gain from Digital-register.
	R.Saturation	0-100	R.Saturation gain from Digital-register.
	G.Saturation	0-100	G.Saturation gain from Digital-register.
	B.Saturation	0-100	B.Saturation gain from Digital-register.
	C.Saturation	0-100	C.Saturation gain from Digital-register.
	M.Saturation	0-100	M.Saturation gain from Digital-register.
	Y.Saturation	0-100	Y.Saturation gain from Digital-register.
	R.Hue	0-100	R.Hue gain from Digital-register.
	G.Hue	0-100	G.Hue gain from Digital-register.
	B.Hue	0-100	B.Hue gain from Digital-register.
	C.Hue	0-100	C.Hue gain from Digital-register.
	M.Hue	0-100	M.Hue gain from Digital-register.
	Y.Hue	0-100	Y.Hue gain from Digital-register.

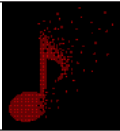
Note:

When “HDR Mode” or “HDR” under “Luminance” is set to “non-off”, all items under “Color Setup” cannot be adjusted.

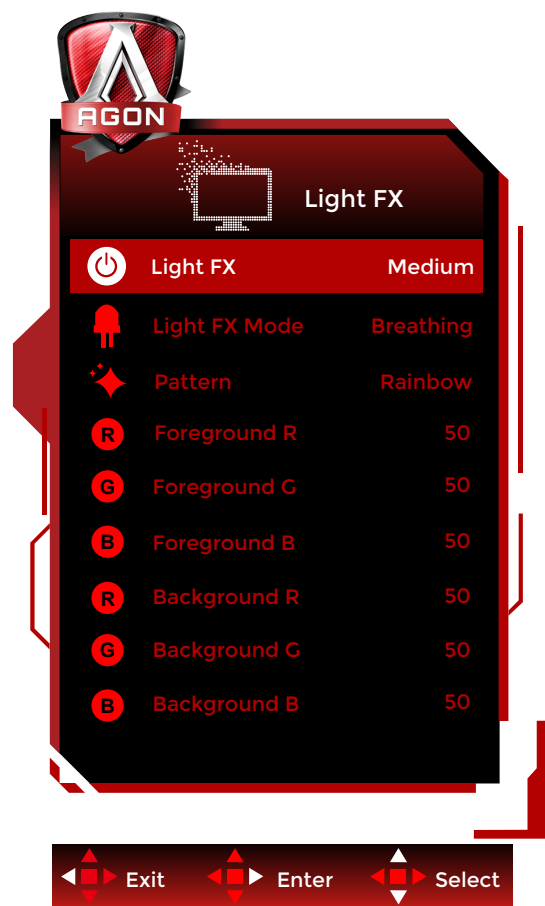
When Color Space is set to sRGB or DCI-P3, all other items under Color Settings cannot be adjusted.


Audio



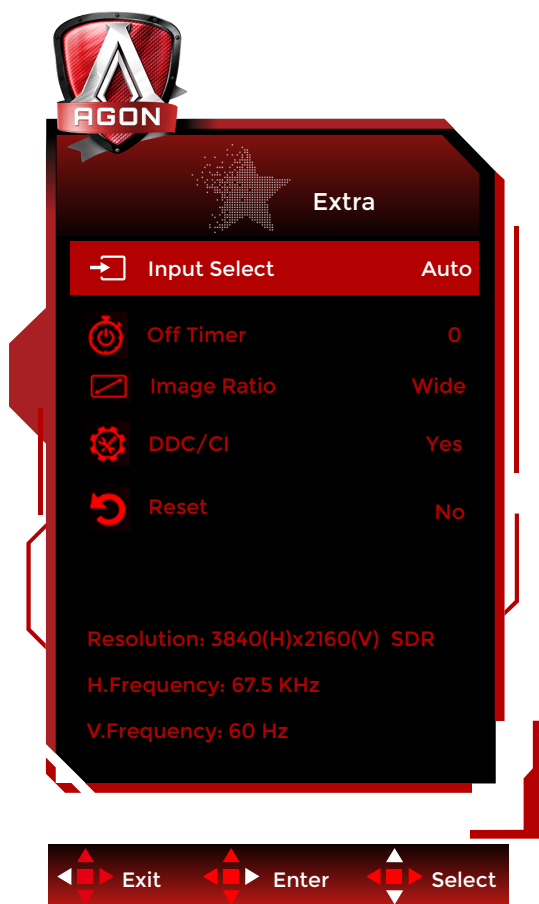
	Volume	0-100	Adjust volume setting
---	--------	-------	-----------------------


Light FX



	Light FX	Off / Low / Medium / Strong	Select the intensity of Light FX.
	Light FX Mode	Audio1 / Audio2 / Static / Dark Point Sweep / Gradient Shift / Spread Fill / Drip Fill / Spreading Drip Fill / Breathing / Light Point Sweep / Zoom / Rainbow / Wave /Flashing / Demo	Select Light FX Mode
	Pattern	Red / Green / Blue / Rainbow / User Define	Select Light FX Pattern
	Foreground R	0-100	User can adjust Light FX foreground color, when Pattern setting to user define
	Foreground G		
	Foreground B		
	Background R	0-100	User can adjust Light FX background color, when Pattern setting to user define
	Background G		
	Background B		

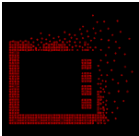
Extra



	Input Select	AUTO/HDMI1/HDMI2/DP	Select Input Signal Source
	Off timer	0-24hrs	Select DC off time
	Image Ratio	Wide / Aspect / 4:3 / 1:1 / 17"(4:3) / 19"(4:3) / 19"(5:4) / 19"W(16:10) / 21.5"W(16:9) / 22"W(16:10) / 23"W(16:9) / 23.6"W(16:9) / 24"W(16:9)	Select image ratio for display.
	DDC/CI	Yes or No	Turn ON/OFF DDC/CI Support
	Reset	Yes or No	Reset the menu to default

OSD Setup



	Language		Select the OSD language
	Timeout	5-120	Adjust the OSD Timeout
	H. Position	0-100	Adjust the horizontal position of OSD
	V. Position	0-100	Adjust the vertical position of OSD
	Transparence	0-100	Adjust the transparence of OSD
	Break Reminder	on /off	Break reminder if the user continuously work for more than 1hrs
	User Key	Dual Resolution/ Game Mode/ Sniper Scope/ Frame Counter	Set as left shortcut key.

LED Indicator

Status	LED Color
Full Power Mode	White
Active-off Mode	Orange

Troubleshoot

Problem & Question	Possible Solutions
Power LED Is Not On	Make sure the power button is ON and the Power Cord is properly connected to a grounded power outlet and to the monitor.
No Images On The Screen	<ul style="list-style-type: none"> Is the power cord connected properly? Check the power cord connection and power supply. Is the video cable connected correctly?? (Connected using the VGA cable) Check the VGA cable connection. (Connected using the HDMI cable) Check the HDMI cable connection. (Connected using the DP cable) Check the DP cable connection. * VGA/HDMI/DP input is not available on every model. If the power is on, reboot the computer to see the initial screen (the login screen.) If the initial screen (the login screen) appears, boot the computer in the applicable mode (the safe mode for Windows 7/8/10) and then change the frequency of the video card. (Refer to the Setting the Optimal Resolution) If the initial screen (the login screen) does not appear, contact the Service Center or your dealer. Can you see "Input Not Supported" on the screen? You can see this message when the signal from the video card exceeds the maximum resolution and frequency that the monitor can handle properly. Adjust the maximum resolution and frequency that the monitor can handle properly. Make sure the AOC Monitor Drivers are installed.
Picture Is Fuzzy & Has Ghosting Shadowing Problem	Adjust the Contrast and Brightness Controls. Press hot-key (AUTO) to auto-adjust. Make sure you are not using an extension cable or switch box. We recommend plugging the monitor directly to the video card output connector on the back.
Picture Bounces, Flickers Or Wave Pattern Appears In The Picture	Move electrical devices that may cause electrical interference as far away from the monitor as possible. Use the maximum refresh rate your monitor is capable of at the resolution you are using.
Monitor Is Stuck In Active Off-Mode	The Computer Power Switch should be in the ON position. The Computer Video Card should be snugly fitted in its slot. Make sure the monitor's video cable is properly connected to the computer. Inspect the monitor's video cable and make sure no pin is bent. Make sure your computer is operational by hitting the CAPS LOCK key on the keyboard while observing the CAPS LOCK LED. The LED should either turn ON or OFF after hitting the CAPS LOCK key.
Missing One Of The Primary Colors (RED, GREEN, or BLUE)	Inspect the monitor's video cable and make sure that no pin is damaged. Make sure the monitor's video cable is properly connected to the computer.
Screen Image Is Not Centered Or Sized Properly	Adjust H-Position and V-Position or press hot-key (AUTO).
Picture Has Color Defects (White Does Not Look White)	Adjust RGB color or select desired color temperature.
Horizontal Or Vertical Disturbances On the screen	Use Windows 7/8/10/11 shut-down mode to adjust CLOCK and FOCUS. Press hot-key (AUTO) to auto-adjust.
Regulation & Service	Please refer to Regulation & Service Information which is in www.aoc.com (to find the model you purchase in your country and to find Regulation & Service Information in Support page.)

Specification

General Specification

Panel	Model name	AG276UZ	
	Driving system	TFT Color LCD	
	Viewable Image Size	68.5 cm diagonal	
	Pixel pitch	0.1554mm(H) x 0.1554mm(V)	
	Display Color	1.07B Colors	
Others	Horizontal scan range	30~510kHz	
	Horizontal scan Size(Maximum)	596.736 mm	
	Vertical scan range	FHD: 48~480Hz UHD: 48~240Hz	
	Vertical Scan Size(Maximum)	335.664 mm	
	Optimal preset resolution	3840x2160@60Hz	
	Max resolution	FHD: 1920x1080@480Hz UHD: 3840x2160@240Hz*	
	Plug & Play	VESA DDC2B/CI	
	Power Source	20Vdc, 4.5A	
	Power Consumption	Typical (default brightness and contrast)	37W
		Max. (Brightness = 100, contrast =100)	≤100W
		Standby mode	≤0.5W
Physical Characteristics	Connector Type	HDMIx2/DisplayPort/USBx2/USB Upstream/Earphone	
	Signal Cable Type	Detachable	
Environmental	Temperature	Operating	0°C~ 40°C
		Non-Operating	-25°C~ 55°C
	Humidity	Operating	10% ~ 85% (non-condensing)
		Non-Operating	5% ~ 93% (non-condensing)
	Altitude	Operating	0m~ 5000m (0ft~ 16404ft)
		Non-Operating	0m~ 12192m (0ft~ 40000ft)

Note

[1]: HDMI 2.1 supports FRL6 48Gbps full specification; DisplayPort 2.1 supports UHBR20 with a total bandwidth of 80 Gbps.

[2]: NVIDIA® graphics cards may experience compatibility issues when outputting HDMI 2.1 (FRL6 48Gbps) signals, potentially causing display abnormalities or automatic computer restarts. It is recommended to use the DisplayPort interface for NVIDIA® graphics cards. AMD® graphics cards can use either HDMI or DisplayPort interfaces.

Signal Version Color Format State Color Bit	HDMI2.1		DisplayPort2.1	
	YCbCr420 YCbCr422	RGB YCbCr444	YCbCr420 YCbCr422	RGB YCbCr444
FHD 480Hz 10/ bit	OK	OK	OK	OK
FHD 480Hz 8/ bit	OK	OK	OK	OK
FHD 320Hz 10 bit	OK	OK	OK	OK
FHD 320Hz 8 bit	OK	OK	OK	OK
UHD 240Hz 10 bit	OK(DSC)	OK(DSC)	OK	OK
UHD 240Hz 8 bit	OK(DSC)	OK(DSC)	OK	OK
UHD 160Hz 10 bit	OK	OK(DSC)	OK	OK
UHD 160Hz 8 bit	OK	OK	OK	OK
UHD 144Hz 10 bit	OK	OK	OK	OK
UHD 144Hz 8 bit	OK	OK	OK	OK
UHD 120Hz 10 bit	OK	OK	OK	OK
UHD 120Hz 8 bit	OK	OK	OK	OK
UHD 100Hz 10 bit	OK	OK	OK	OK
UHD 100Hz 8 bit	OK	OK	OK	OK
Low resolution 8 bit/10 bit	OK	OK	OK	OK

Note:

The maximum number of display colors supported by this product is 1.07 billion, and the setting conditions are as follows (there may be differences due to the output limitation of some graphics cards):

Preset Display Modes

PC timing support

Resolution	Signal Version Source State	UHD		FHD	
		HDMI2.1	DisplayPort2.1	HDMI2.1	DisplayPort2.1
640x480/60Hz		√	√	√	√
640x480/67Hz		√	√	√	√
640x480/72Hz		√	√	√	√
640x480/75Hz		√	√	√	√
640x480/100Hz		√	√	√	√
640x480/120Hz		√	√	√	√
720x400/70Hz		√	√	√	√
800x600/56Hz		√	√	√	√
800x600/60Hz		√	√	√	√
800x600/72Hz		√	√	√	√
800x600/100Hz		√	√	√	√
800x600/120Hz		√	√	√	√
832x624/75Hz		√	√	√	√
1024x768/60Hz		√	√	√	√
1024x768/70Hz		√	√	√	√
1024x768/75Hz		√	√	√	√
1024x768/100Hz		√	√	√	√
1024x768/120Hz		√	√	√	√
1280x1024/60Hz		√	√	√	√
1280x1024/75Hz		√	√	√	√
1920x1080/60Hz		√	√	√	√
1920x1080/320Hz				√	√
1920x1080/480Hz				√	√
2560x1440/120Hz		√		√	√
2560x1440/144Hz		√		√	√
3840x2160/30Hz			√		
3840x2160/60Hz		√	√		
3840x2160/100Hz		√	√		
3840x2160/120Hz		√	√		
3840x2160/144Hz		√	√		
3840x2160/160Hz		√	√		
3840x2160/240Hz		√	√		

Video timing support

Resolution	Signal Version Source State	UHD		FHD	
		HDMI2.1	DisplayPort2.1	HDMI2.1	DisplayPort2.1
640x480p,59.94Hz/60Hz		√	√	√	√
720x480p,59.94Hz/60Hz			√	√	√
720x480p,59.94Hz/60Hz		√	√	√	√
720x576p,50Hz			√	√	√
1280x720p,50Hz		√	√	√	√
1280x720p,59.94Hz/60Hz		√	√	√	√
1920x1080i,50Hz		√	√	√	√
1920x1080p,50Hz			√	√	√
1920x1080i,59.94Hz/60Hz		√	√	√	√
1920x1080p,59.94Hz/60Hz			√	√	√
1920x1080p,119.88Hz/120Hz		√	√	√	√
3840x2160p,23.98Hz/24Hz		√	√	√	√
3840x2160p,25Hz		√			
3840x2160p,29.97Hz/30Hz		√			
3840x2160p,50Hz		√			
3840x2160p,59.94Hz/60Hz		√			
3840x2160p,100Hz		√			
3840x2160p,120Hz		√			

Note

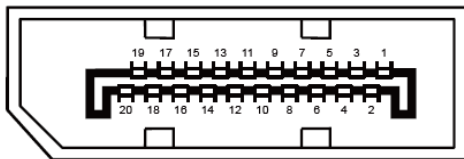
1. To achieve the desired image quality, please refer to the above table to set the resolution of the input signal source. The set resolution varies depending on the signal output device: For console games, it is recommended to refer to "Video timing support". For PC games, it is recommended to refer to "PC timing support".
2. To switch the "Dual Resolution" setting of the monitor, please go to the OSD menu - > "Game Settings" - > "Dual Resolution".
3. To ensure that the above resolutions can operate normally, please first check the compatibility of the graphics card. Due to the different strategies of various graphics cards, some options may be hidden. Please refer to the actual support situation of the graphics card.
4. According to the VESA standard, different operating systems and graphics cards may have certain errors (+/-1Hz) when calculating the refresh rate (field frequency). The specific refresh rate (field frequency) should be subject to the actual situation.

Pin Assignments



19-Pin Color Display Signal Cable

Pin No.	Signal Name	Pin No.	Signal Name	Pin No.	Signal Name
1.	TMDS Data 2+	9.	TMDS Data 0-	17.	DDC/CEC Ground
2.	TMDS Data 2 Shield	10.	TMDS Clock +	18.	+5V Power
3.	TMDS Data 2-	11.	TMDS Clock Shield	19.	Hot Plug Detect
4.	TMDS Data 1+	12.	TMDS Clock-		
5.	TMDS Data 1Shield	13.	CEC		
6.	TMDS Data 1-	14.	Reserved (N.C. on device)		
7.	TMDS Data 0+	15.	SCL		
8.	TMDS Data 0 Shield	16.	SDA		



20-Pin Color Display Signal Cable

Pin No.	Signal Name	Pin No.	Signal Name
1	ML_Lane 3 (n)	11	GND
2	GND	12	ML_Lane 0 (p)
3	ML_Lane 3 (p)	13	CONFIG1
4	ML_Lane 2 (n)	14	CONFIG2
5	GND	15	AUX_CH(p)
6	ML_Lane 2 (p)	16	GND
7	ML_Lane 1 (n)	17	AUX_CH(n)
8	GND	18	Hot Plug Detect
9	ML_Lane 1 (p)	19	Return DP_PWR
10	ML_Lane 0 (n)	20	DP_PWR

Plug and Play

Plug & Play DDC2B Feature

This monitor is equipped with VESA DDC2B capabilities according to the VESA DDC STANDARD. It allows the monitor to inform the host system of its identity and, depending on the level of DDC used, communicate additional information about its display capabilities.

The DDC2B is a bi-directional data channel based on the I2C protocol. The host can request EDID information over the DDC2B channel.