

AOC GM500 RGB Gaming Mouse

USER'S GUIDE
Ver.:1.00



CAUTION: To use this product properly, please read the user's guide before installing.

Contents

1. PACKAGE CONTENTS/SYSTEM REQUIREMENTS	1
2. SPECIFICATIONS	1
3. DEVICE LAYOUT	2
4. AOC G-TOOLS INSTALLATION	3
5. AOC G-TOOLS INTRODUCTION	4
6. SAFETY GUIDE AND MAINTENANCE	13

PACKAGE CONTENTS/SYSTEM REQUIREMENTS

Package Contents

- AOC GM500 FPS Gaming Mouse
- Quick Setup Guide

Product System Requirements

- Windows® 7/8/8.1/10
MAC OS X (V10.7 to 10.9)
- Available USB port
- 160MB free hard disk space
- Internet connection

AOC G-Tools System Requirements

- Windows® 7 or above
- 160MB free hard disk space
- Internet connection

Technical Support

- 2 years limited warranty
- Free online technical support at www.aoc.com

SPECIFICATIONS

Technical Specifications

- Advanced optical sensor with true 5,000 DPI
- Switchable DPI - 800/1600/3200/5000/smart DPI (default 1600 DPI)
- Up to 100 inches per second (IPS) and 20g acceleration
- 8 programmable buttons
- Swappable left and right keys
- Omron mechanical switch with up to 50 million clicks lifespan
- Up to 1000 Hz/1ms report rate
- Symmetry design for right and left hand user
- Customizable RGB lighting effect syncing with other AOC gaming devices
- 1.8 M braided cable

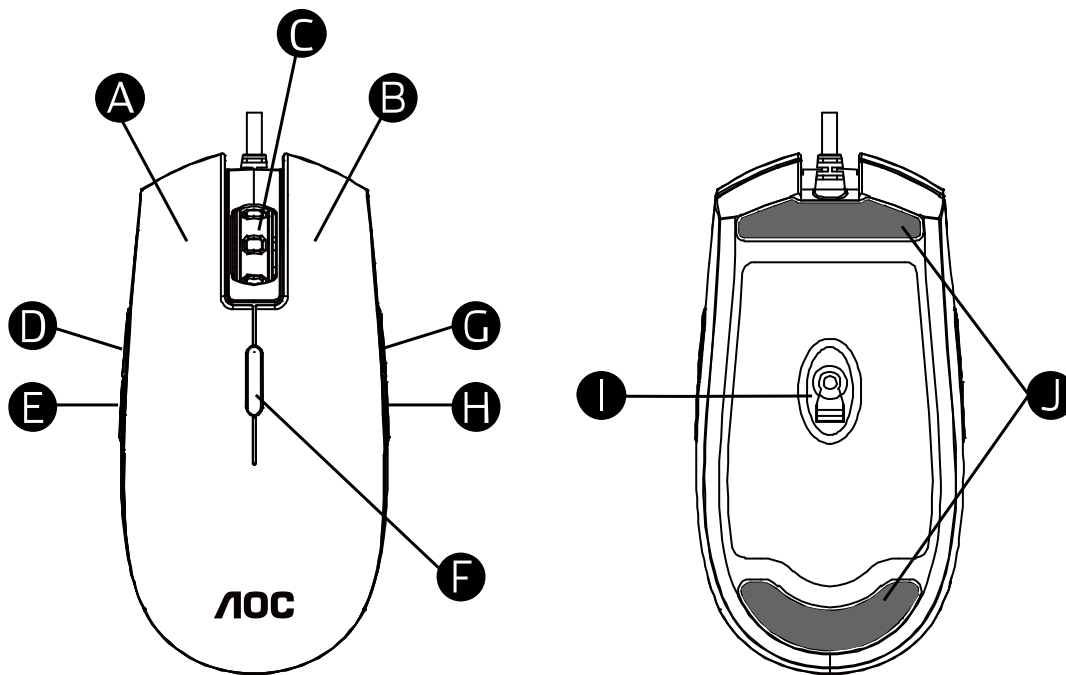
Approximate Size & Weight

- Length: 123.80 mm/ 4.9 in
- Width: 63.42 mm/ 2.5 in
- Height: 37.90 mm/ 1.54 in
- Weight: 145 g/0.32 lbs
- Cable Length: 1.8 m/ 5.9 ft

Operating Environment

- Operating Temperature: 0 ° C (32 ° F) to 40 ° C (104 ° F)
- Operating Humidity: 10% - 85%

DEVICE LAYOUT



- A. Left Button
- B. Right Button
- C. Middle Button/Scroll Wheel
- D. DPI Shift
- E. WWW Home
- F. DPI Cycle
- G. Browser Forward
- H. Browser Backward
- I. True 5,000 DPI Optical Sensor
- J. Smooth Mouse Feet

AOC G-TOOLS INSTALLATION

Step 1: Plug the device into a USB port on your computer.

Step 2: The computer operating system will automatically detect the device.

Step 3: For more information on programming the device, go to <http://www.aoc.com> and follow the instruction to find the AOC G-Tools.

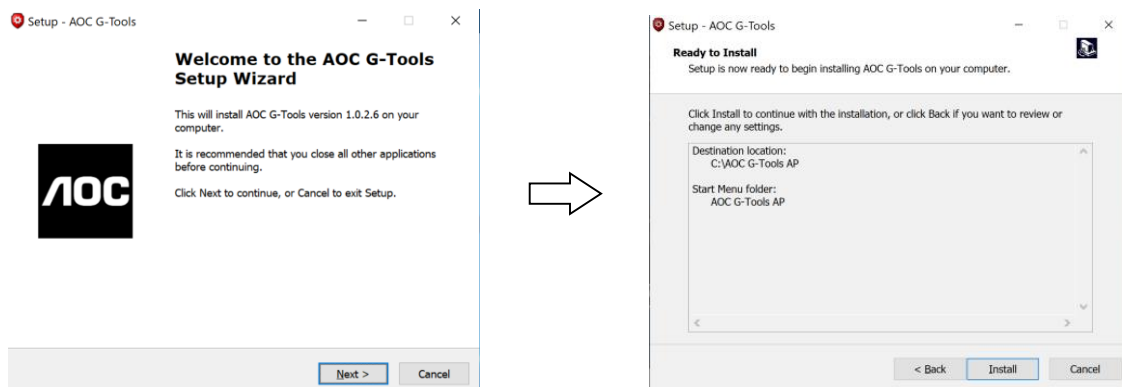
Step 4: Download AOC G-Tools.

Step 5: Start the installation process by clicking on the file "Setup.exe".

Step 6: Windows® will prompt you if installation should continue; install the driver despite this.

Note:

When updating to the latest version, the driver will firstly uninstall the last version; it may take a while for the driver to install before you can start programming the device.



Step 7: When the installation process is completed, please reboot your computer system to assure the smooth running of the program.

Step 8: The AOC G-Tools icon is displayed in the Windows® taskbar while AOC G-Tools is running, you can access the device configuration menu by right clicking it.

AOC G-TOOLS INTRODUCTION

Game Profile Management



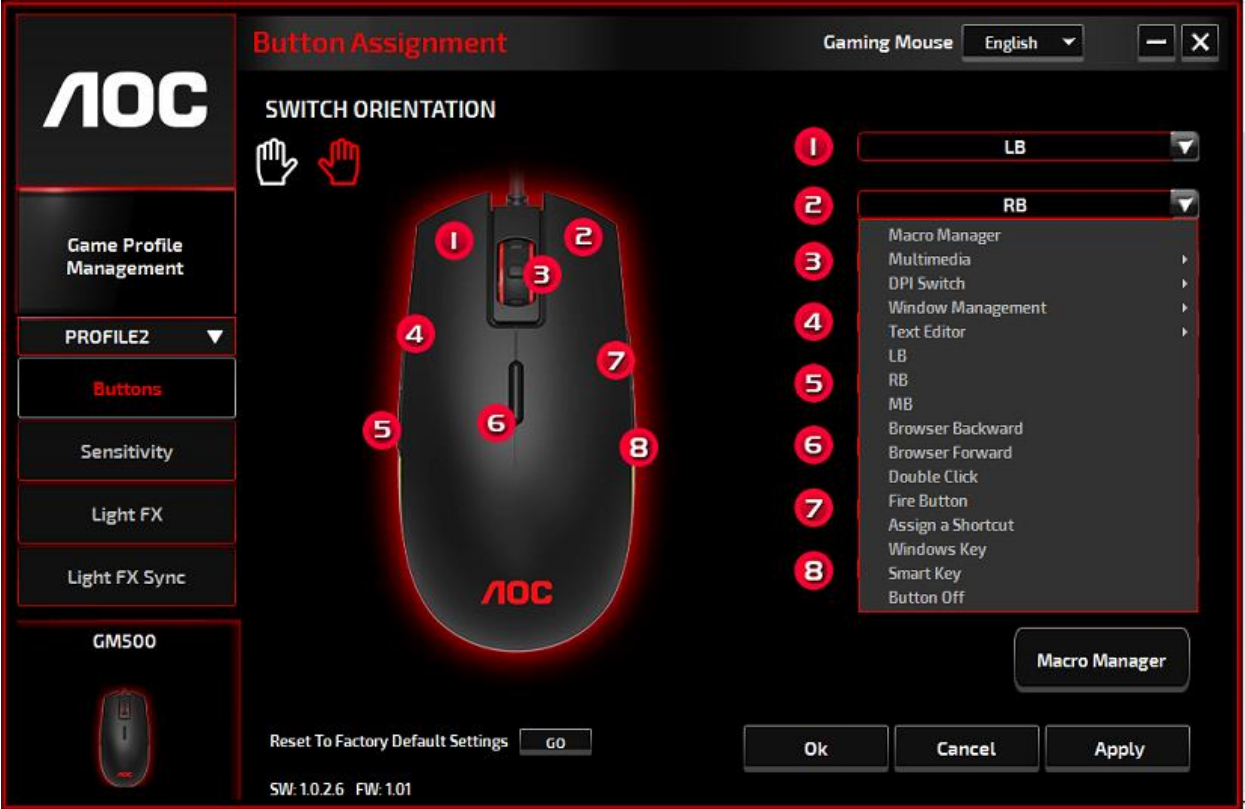
You can export a profile by clicking  or import a profile from your computer by clicking .



The default profile names are Profile 1 to Profile 5. You can rename your profiles by typing on the text field below Profile Name.

Each game profile supports 7 macro keys, and the on-board memory of the device supports one profile for you to take anywhere with you.

Each profile can be activated along with a linked program. To do so, put the executable path of the program you want to link in the text field of Path To Executable (*.EXE).

Buttons



Switch between the left and right hand orientation by clicking the icon  or . The icon in functioning is shown in red; right hand orientation is set as default.

For each numbered button, you could assign an action from its drop-down menu. Options listed in the drop-down menu are explained in the following.

■ Macro Manager

A macro is a prerecorded sequence of keystrokes and button presses executed with precise timing. By assigning a macro to a button, you can execute complex combinations with ease. GM500 allows you to create, delete, import, and export your macros. When choose this option from the drop-down menu, the Macro Manager window will pop-up; you could select an existing macro as the assignment of the button, or start to record a new macro and assign it to the button. If you like to perform the assignment later, click the **Macro Manager** button in the lower right corner; the Macro



Manager window will show for your further operations as below.

1. Create a Macro

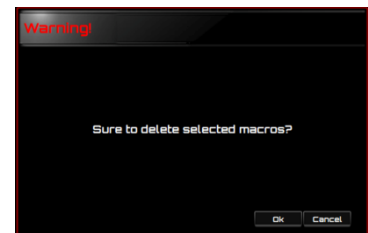
- (1) Click **+** and name the macro you are about to record. Confirm the name by hitting the enter key on your keyboard.
- (2) Set the delay time between events:
 - Recording: The delay between events are registered as they are recorded.
 - Fixed: Use a predefined time (shown in millisecond) for the delay.
 - Ignore: Omit all the pauses between keystrokes and button presses.
- (3) Click **Start** to record all your keystrokes and mouse button commands into the macro. When done, click **Stop** to complete this recording.
- (4) Click **Cancel** if you want to discard this recording, or **Ok** to confirm this recording. Successfully recorded macros can be found from the drop-down list of the Macro Select.
- (5) For any recorded macro, you could later delete or adjust its event sequences, or add new events by initiating another recording session.

Note:

Each Macro key can record 64 actions (32keys).

2. Delete a Macro

Select the macro to be deleted and click on the trash bin button down below. A message window will pop up to confirm your decision. Click **Ok** to delete the macro.



3. Edit Delay

To adjust the delay time, double-click the field to be revised and enter the new value. Some games may not be able to detect short delays.

4. Delete Recorded Actions

To delete a single or multiple actions or delay time of the macro, click the trash bin button.

5. Insert Macro Item

Click **+** to start inserting another macro to an existing macro. Choose to record this new macro before or after the existing one; then click **Start** to start the recording. When done, click **Stop** to complete the session and **Save** to keep the recording. You can also insert delay time before/after the selected event. After entering the desired time value, click **Save**.

■ Multimedia

Open Player: Start media player.

Pre Track: Toggle to the previous media track.

Next Track: Toggle to the next media track.

Play/Pause: Toggle between playing and pausing media.

Stop: Stop playing the media.

Mute: Mute (turns off) the computer sound.

Volume +: Increase the computer sound volume.

Volume -: Decrease the computer sound volume.

- **DPI Switch**

DPI Cycle: Cycle between the 5 options of the G-Tools.

DPI Up: Increase the DPI.

DPI Down: Decrease the DPI.

DPI Shift: Predefined DPI at 400.

- **Window Management**

Calculator: Start Microsoft Calculator.

Email: Start the default mail program.

WWW Favorites: Open the Internet Explorer Favorites.

WWW Forward: Go to the next webpage.

WWW Back: Go to the previous webpage.

WWW Stop: Stop loading webpage.

My Computer: Open the My Computer window (or This PC for Win10).

WWW Refresh: Refresh the current webpage.

WWW Home: Start the default web browser and load the homepage.

WWW Search: Go to web browser search bar or Search Windows.

Show Desktop: Switch between desktop and the current view.

- **Text Editor**

9 text commands available: Cut, Copy, Paste, Undo, Select All, Find, New, Save, and Open.

- **Left Click**

Perform a left-click.

- **Right Click**

Perform a right-click.

- **Middle Click**

Activate the universal scrolling function.

- **Browser Backward**

Perform "Backward" command for most internet browsers.

- **Browser Forward**

Perform "Forward" command for most internet browsers.

- **Double-Click**

Perform a double-click.

- **Fire Button**

Perform a fire button until release.

- **Assign a Shortcut**

Assign a shortcut combination.

- **Windows Key**

Start Windows menu.

- **Smart Key**

If you assign a button with Smart Key function, while holding down the Smart Key, press the other button, the Smart Key will repeat this button's action continuously.

- **Button Off**

Switch off the button.

Sensitivity

- **DPI Setting**

You can define 4 sets of the DPI values ranged from 200 to 5000 to suit your needs. The set DPI values will be applied to the DPI cycle function. When a set value is currently in use, it will be highlighted in red, and the corresponding LED color will be shown on your device.

The default values are as below:

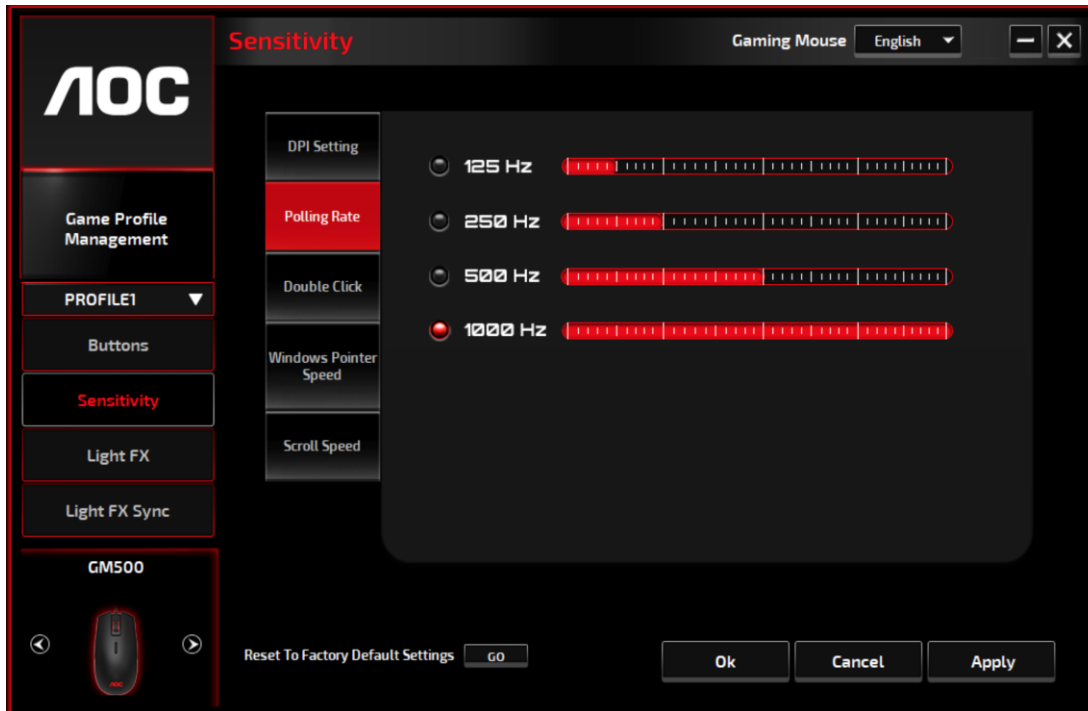
- DPI #1: 800 DPI / Red LED
- DPI #2: 1600 DPI / Orange LED (Default)
- DPI #3: 3200 DPI / Blue LED
- DPI #4: 5000 DPI / Green LED
- DPI #5: SMART DPI / Purple LED



When switching DPI, the scroll light of GM500 displays the corresponding color for 5 seconds and then resumes the lighting effect in use.

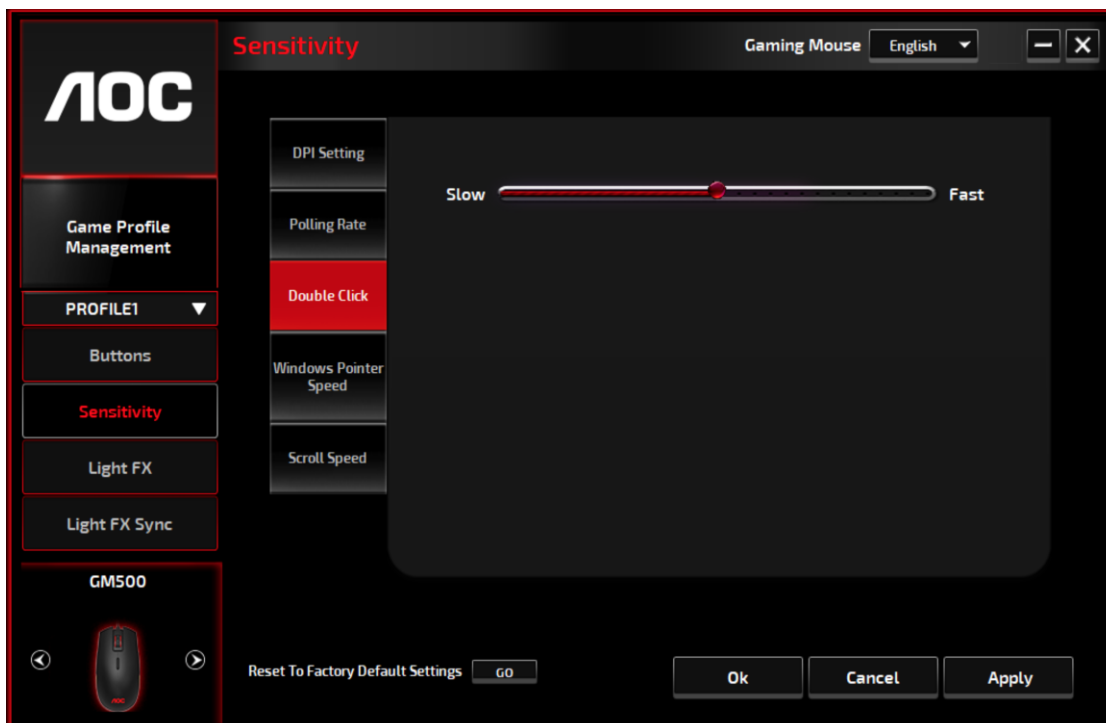
■ Polling Rate

Choose from 4 options of polling rate: 125Hz/8ms, 250Hz/4ms, 500Hz/2ms, 1000Hz/1ms(default).



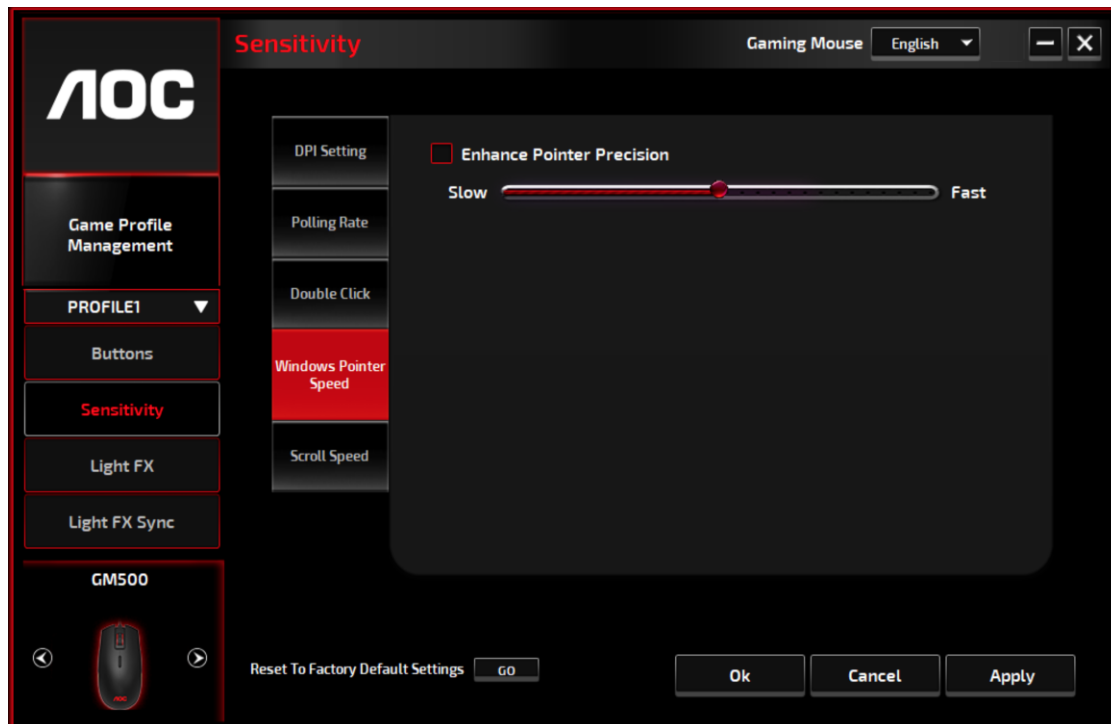
■ Double Click

Drag the slider bar knob toward left or right to adjust the double-click speed.



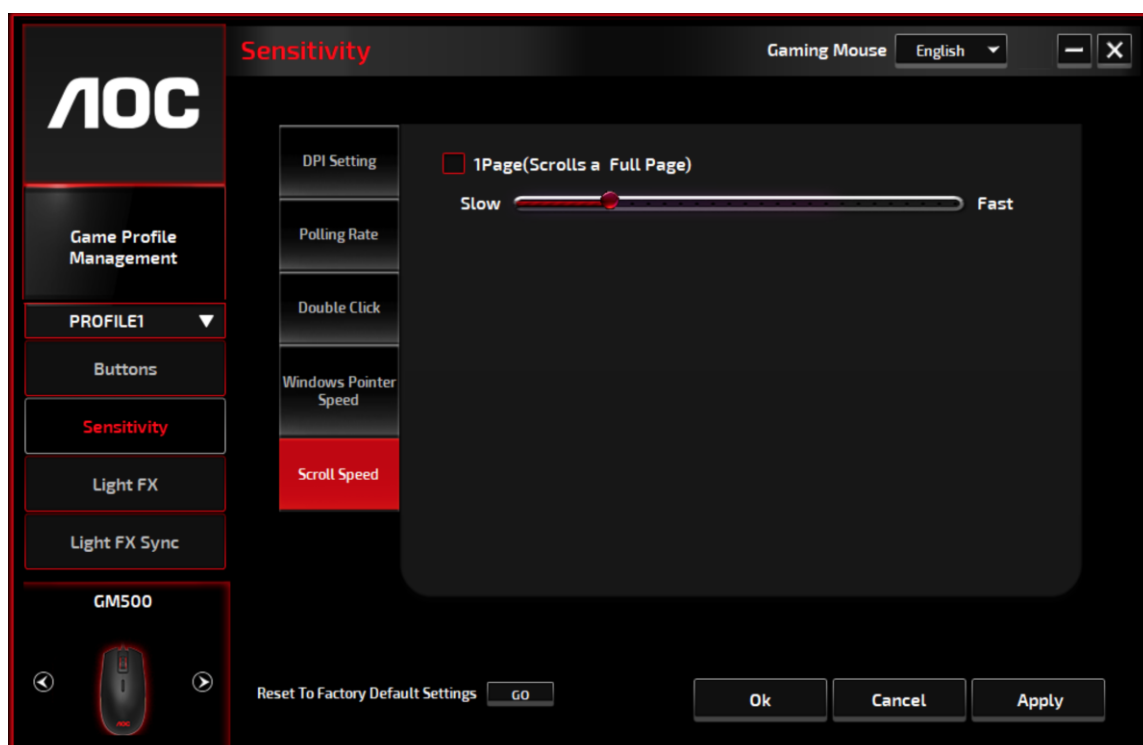
■ Windows Pointer Speed

Drag the slider bar knob toward left or right to adjust the Windows Pointer Speed. The set value will also be applied to the Windows Control Panel. We recommend keeping the default setting.

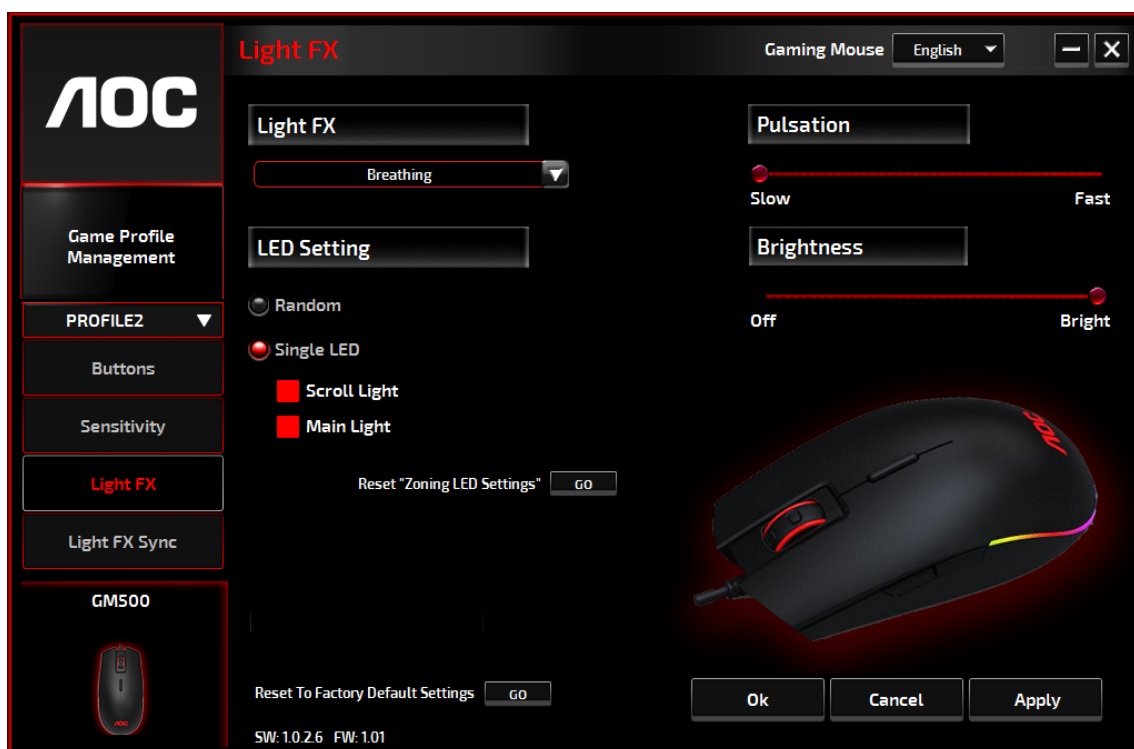


■ Scroll Speed

Drag the slider bar knob toward left or right to adjust the scrolling speed for viewing a document or webpage. To test the set value, hit **Apply** and check how it works when viewing.



Light FX



■ Light FX

Choose from the drop-down menu for your favorite light setting. Options are: Static, Breathing, Blink, Flashing, and DPI.

■ LED Setting

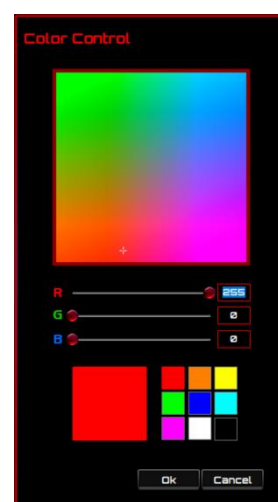
Choose from the options of Radom and Single LED to set the lighting effect to continuously changing colors or an appointed RGB color for Scroll Light and Main Light. To restore the default light settings, hit the **GO** beside Reset "Zoning LED Settings".

✓ Radom:

Lighting colors cycle between 12 predefined colors.

✓ Single LED:

To set the color, click the color square before Scroll Light/Main Light; the Color Control windows will pop up. Point at any spot on the RGB panel to set your favorite color, or enter RGB values to define the color. The Scroll Light color setting is available for Static, Breathing, and Blink effect.



■ Direction

The Flashing lighting effect also offers the option to display the main light clockwise or counterclockwise; when Flashing is chosen, the setting option of Direction is displayed.

■ Pulsation

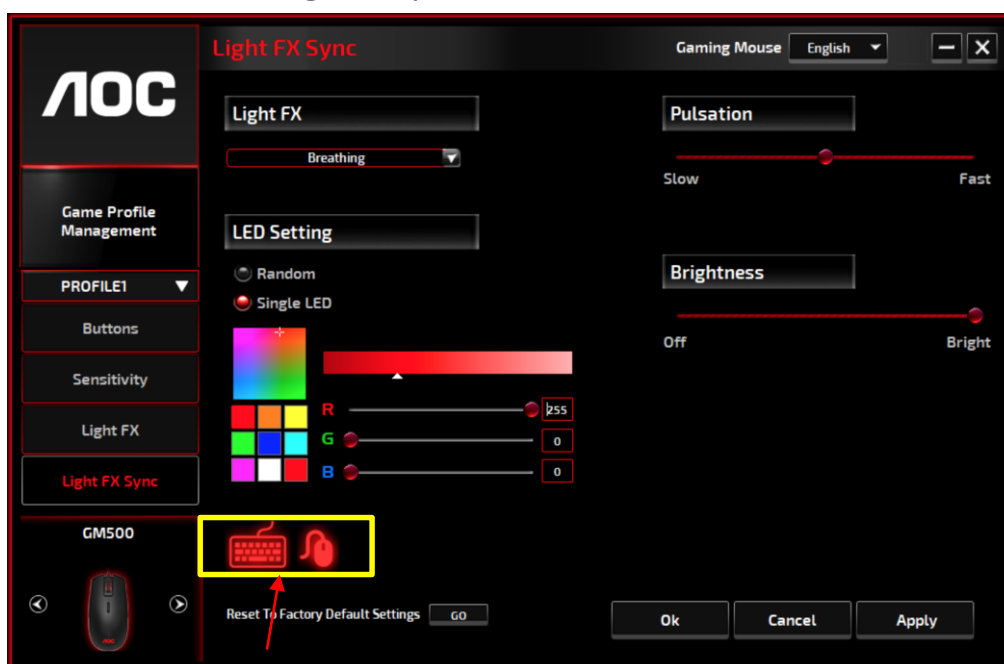
Drag the slider bar knob toward left or right to set up the speed of the lighting effect, three options are available from Slow to Fast.

■ Brightness

Drag the slider bar knob toward left or right to set up the brightness of the lighting effect, four levels of lighting brightness are available from Off to Bright. This setting option is available for all of the lighting effects.

Light FX Sync

The lighting effect of GM500 can be synchronized with other AOC gaming devices that support the AOC Light FX Sync. To sync the devices, select the icons of the devices of your choice and click **Apply**. The synchronized devices are lighted up in red.

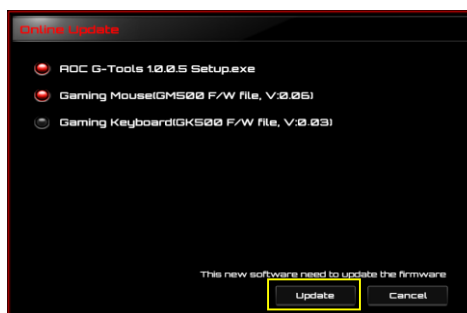


■ Reset To Factory Default Settings

By clicking the **GO** button, all the settings you have made will be reset to factory default settings.

Online Update

When there is new update available, a notice balloon would show on the upper right corner along with the tool icon.



Click on the notice balloon, a pop-up window will show the update options. Click **Update** and follow the process to complete the update process.

SAFETY AND MAINTENANCE

Important

For your safety, please carefully read the following guidelines on the device.

1. Do not operate the device under abnormal conditions.
2. Avoid looking directly at the device's tracking beam or pointing the beam at anyone's eyes. Please note that the tracking beam is not visible to the naked eye and is set as always-on.
3. Do not disassemble the device (this will void the warranty) and do not attempt to operate under abnormal current loads.
4. Keep the device away from liquid or moisture. Operate the device only within the indicated temperature range: 0 ° C (32 ° F) to 40 ° C (104 ° F). If the temperature is too high, unplug the device to lower the temperature.
5. Unplug and replug the device if the RGB lighting is not running properly or the device is not functioning, or if there is thermal abnormal situation.
6. If the troubleshooting is not working, unplug the device and visit www.aoc.com for support. Do not attempt to repair the device by yourself.

Safety

Federal Communication Commission Interference Statement

This device complies with Part 15 of the FCC Rules. Operation is subject to the following two conditions:

- (1) This device may not cause harmful interference.
- (2) This device must accept any interference received, including interference that may cause undesired operation.

Note: This device has been tested and found to comply with the limits for a Class B digital device, pursuant to Part 15 of the FCC Rules. These limits are designed to provide reasonable protection against harmful interference in a residential installation. This device generates uses and can radiate radio frequency energy and, if not installed and used in accordance with the instructions, may cause harmful interference to radio communications. However, there is no guarantee that interference will not occur in a particular installation. If this device does cause harmful interference to radio or television reception, which can be determined by turning the device off and on, the user is encouraged to try to correct the interference by one or more of the following measures:

- Reorient or relocate the receiving antenna.
- Increase the separation between the device and receiver.
- Connect the device into an outlet on a circuit different from that to which the receiver is connected.
- Consult the dealer or an experienced radio/TV technician for help.

